

*Welcome to the February 2026 Rural Resilience
Innovation Hub Convening.
The meeting will begin shortly.*

Rural Resilience Related County Plans: Opportunities for Collaboration

February 19, 2026
1:00pm – 2:30pm PT

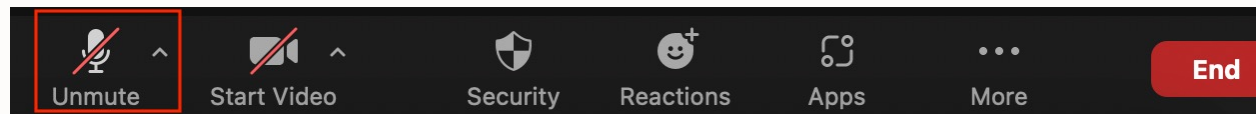


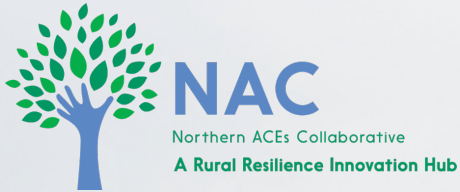
This event is being recorded and transcribed.

Why? PHIL uses the recording and transcription to assess key takeaways, participant needs, and to develop better events for you in the future.

Recordings will be available by request after the event.
Email info@pophealthinnovationlab.org to request access.

Please mute your microphone during the presentation.





Rural Resilience Related County Plans: Opportunities for Collaboration

February 19, 2026
1:00pm – 2:30pm PT

*February 2026 Rural Resilience
Innovation Hub Convening*



Welcome In & Context

Kathryn Stewart, MPP

*Population Health
Innovation Lab (PHIL)*





Beyond Land Acknowledgment

The Population Health Innovation Lab team respectfully acknowledges that we live and operate on the unceded land of Indigenous peoples throughout the U.S.

Acknowledgment is the beginning. Acknowledgment—and the research required to do it with integrity—should be an invitation to deeper analysis, relationship, and action.

Learn more about how to go *beyond* land acknowledgments. Visit www.nativegov.org

Photo by [Ralph \(Ravi\) Kayden](#) on [Unsplash](#)



Welcome & Housekeeping



Roll Call

Please share your name, location, and organization in the chat.



Housekeeping

Be present & take care of yourself. Place questions in the chat. Slides will be shared after the meeting



Thank You for Your Support!

The Rural Resilience Innovation Hub is made possible through support from the Office of Youth and Community Restoration (OYCR).

OYCR's investment allows rural partners to learn together, strengthen systems, and improve outcomes for youth and families.





Engage with Us!

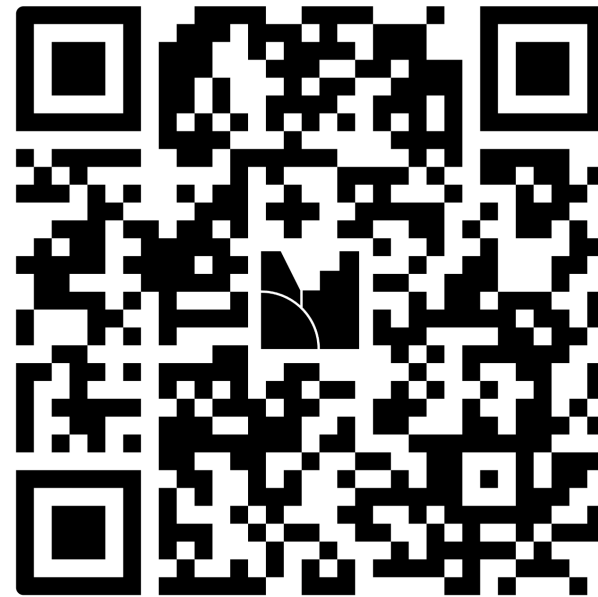
Join at [menti.com](https://www.menti.com) | use code 5505 9358

 Mentimeter

Go to
www.menti.com

Enter the code

5505 9358



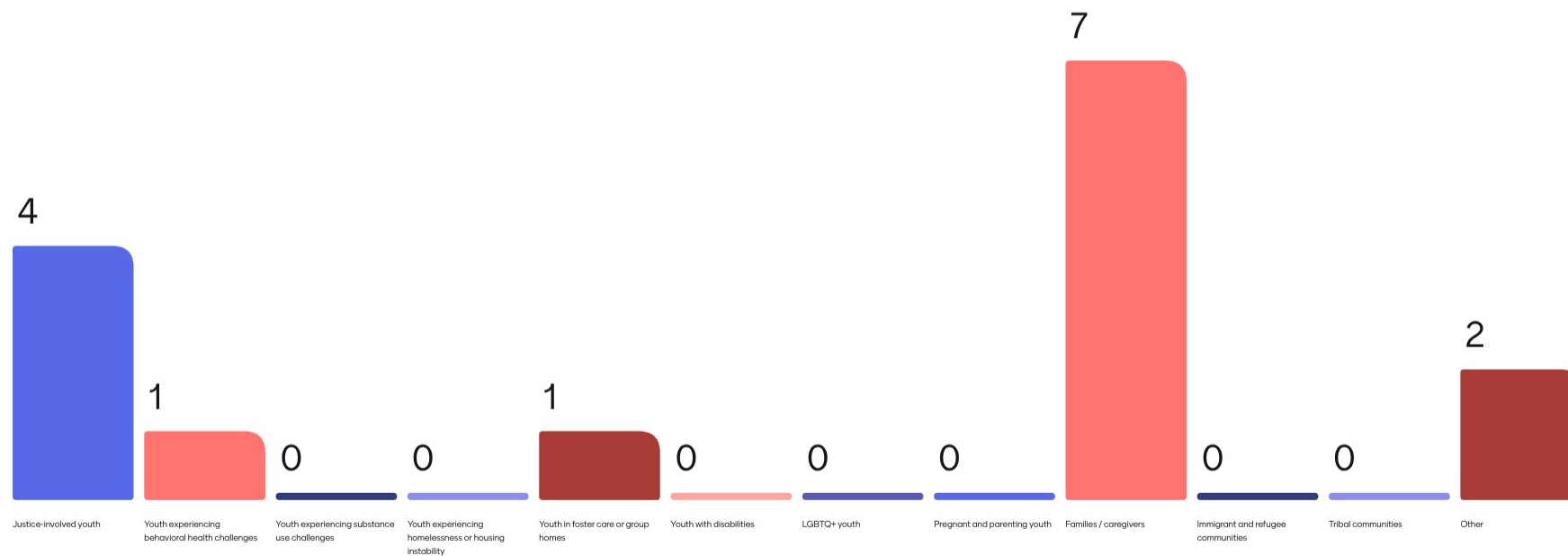
Or use QR code



Menti-Meter Time!



Which communities or groups are at the center of your work? *Select any and all that apply.*



Agenda

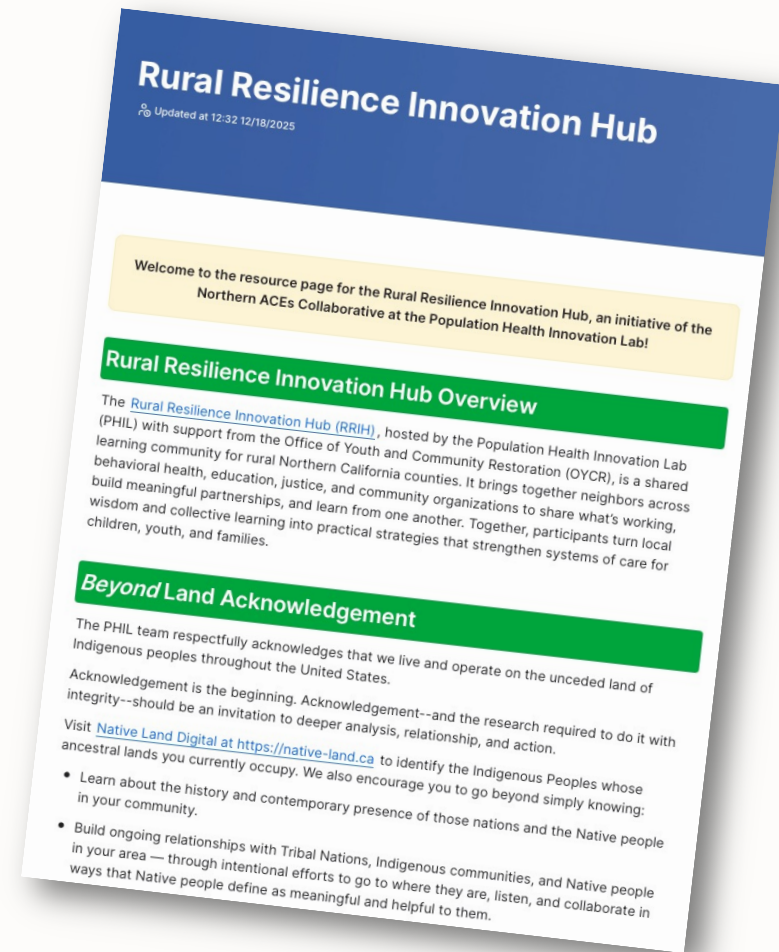
- Welcome and Framing
- Networking
- Overview of County Plans
 - BHSA County Behavioral Health Integrated Plan
 - CHA & CHIP
 - Juvenile Justice Realignment Block Grant County Plan
- Dialogue Groups
- Closing and Next Steps



Rural Resilience Innovation Hub Resource Doc



[Link to Resource Document](#)





The Northern ACEs Collaborative's (NAC)
Rural Resilience Innovation Hub (RRIH):
2025 - 2026

- **NAC Vision:** All Northern California residents have everything they need to live resilient and happy, healthy lives.
- **RRIH Purpose:** To strengthen rural Northern California county systems serving children and youth by aligning behavioral health and justice efforts through peer learning, cross-sector collaboration, and shared problem-solving.

To learn more about the Northern ACEs Collaborative (NAC) and other NAC Initiatives, past and present, visit the [NAC Section of the PHIL website](#).





RRIH Meeting Dates

- December 18, 2025 | Strengthening Partnerships Across Systems
- January 22, 2026 | Community-Engaged Practices
- **February 19, 2026 | Rural Resilience Related County Plans: Opportunities for Collaboration**
- March 19, 2026 | Leveraging CYBHI to Support Youth and Families
- April 23, 2026 | Office of Youth and Community Restoration (OYCR) and Least Restrictive Care: A Plain-Language Overview for Counties
- May 19, 2026 | In person, McConnell Foundation



Mark Your Calendar: May Gathering



In-Person RRIH Meeting

May 19 | 10am – 2pm

McConnell Foundation

Redding, CA 96003

More information coming soon!





Follow-Up from January's RRIH

How Did Siskiyou's Partnerships "Gel"?

- Seek to understand how your organization can be a resource to other organizations.
- Listen, engage and honor where the potential partner is.
- Stay current in the field, learn about best practice programs and services.
- Be ok with difficult conversations (listen, listen, listen).
- Do good work together with others, and never take credit for the successes.
- Be ok with asking for funds.
- Finally, rest, take care of yourself so that you bring your best self to the room.



Dialogue Groups

Join a small group and share:

- *Name*
- *County and Organization*
- *What has your experience been with county-level strategic planning efforts (e.g. Community Health Improvement Plan of a public health department)?*





Rural Resilience Related County Plans: Opportunities for Collaboration

Understanding How Community-Level Strategic Planning Intersects and
Aligns Across Initiatives





Fierce Urgency for Community Driven Partnerships

Three Pillars of Community-Centered Transformation



Community- Anchored Accountability

*Initiatives that lay
the foundation for
improved
accountability,
member
involvement and
transparency*



Community Planning

*Aligned community
planning efforts
across public health,
managed care, and
behavioral health*



Community Investment

*Efforts to strengthen
community
investments with
community
planning*



Rural Resilience Related County Plans: Opportunities for Collaboration



Justice Systems - Behavioral Health - Public Health



Example Ecosystem of Partners in Youth Resilience Planning



Multisolving Mindset Approach: One Action, Many Benefits

Multisolving means designing one action that supports multiple goals at the same time — instead of working on each plan separately.

Why Try a Multisolving Approach?

1. Avoid solving one problem while making another worse
2. Use the wisdom of **multiple sectors and lived experience**
3. Make better use of time, energy, and partnerships
4. Strengthen solutions that are hard to move forward alone
5. Break from business-as-usual in siloed systems

As you review these plans, listen for:

- *Where you recognize your own work.*
- *Where you see overlap.*
- *Where could alignment reduce burden or improve outcomes?*



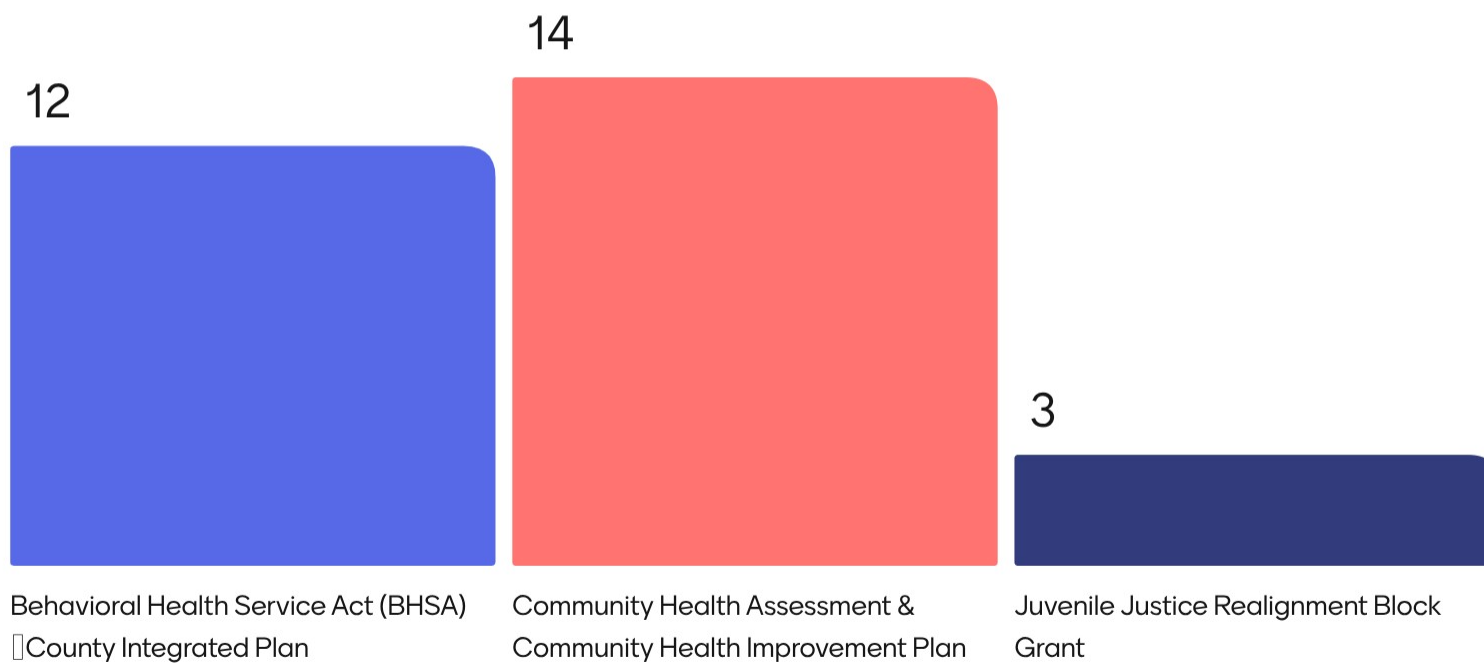
Restorative Youth Aligned Plans

Plan Type	Responsible Local Agency	Required Partner	Dates
Integrated Behavioral Health Plan	County Behavioral Health	LHJs and MCPs	Draft March 31, 2026 Final June 30, 2026
Community Health Assessment / Community Health Improvement Plans	Local Health Jurisdiction	Managed Care Plan	Every 3 Years
Juvenile Justice Realignment Plan	Probation	BH, Education, Community Organizations	May 1, 2026

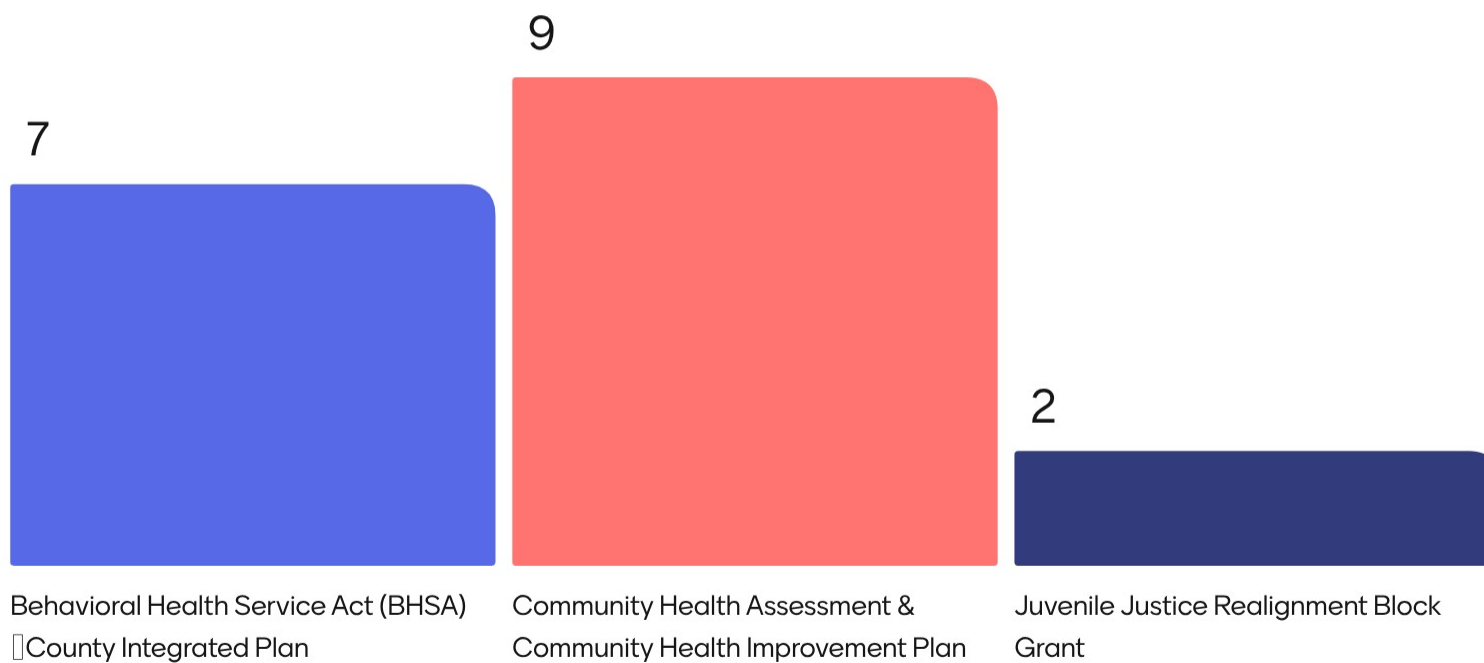
Menti-Meter Time!



Which of the three plans have you heard of? *Select all that apply.*



Which of the three plans are you currently involved in? *Select all that apply.*



Behavioral Health Service Act (BHSA) County Behavioral Health Integrated Plan



What is it?

A 3-year integrated plan outlining how behavioral health funding will be used in the community to:

- Meet statewide and local outcome measures
- Reduce disparities
- Address unmet needs along the [Behavioral Health Care Continuum](#)

Key Dates

Draft Due: March 31, 2026
Final Due: June 1, 2026
Updated annually during 3-year cycle

Who is involved?

- **Lead:**
 - County Behavioral Health Department
- **Engaged during Development:**
 - Community members/People with lived experience
 - PH, Education, Public Safety, Housing, Tribal, CBOs, BH, Social Services
- **Local Approver:**
 - Local Behavioral Health Board/County Board of Supervisors
- **State-level Oversight:**
 - Department of Health Care Services (DHCS)

Why does this matter?

- ✓ Sets priorities for behavioral health access, equity, and outcomes
- ✓ Used locally to guide investments and services
- ✓ Alignment with data and priorities of Public Health's CHA/CHIP and Probation's youth justice planning can maximize impact and reduce siloed work

How to get involved

- Participate in community engagement processes
- Contact your [local BHSA Coordinator](#)



Community Health Assessment (CHA) & Community Health Improvement Plan (CHIP)



What is it?

CHA:

- Identifies community needs, assets, and disparities in a defined region

CHIP:

- A long-term plan (3-5 years) that turns CHA findings into strategies and actions to improve population health.

Key Dates

New Alignment Required: January 1, 2028
LHJs required to conduct and align with a 3-year CHA/CHIP cycle to align with DHCS' Managed Care Plan Population Needs Assessment Requirement

LHJ CHA or Data Refresh Due: December 2028
LHJ CHIP or Data Refresh Due: June 30, 2029

Who is involved?

- **Lead:**
 - Local Health Jurisdiction (Public Health Department) – *CHA/CHIP is required for LHJ accreditation*
- **Engaged during Development:**
 - Medi-Cal Managed Care Plan (required)
 - Community organizations (e.g., County agencies, CBOs, hospitals)
 - Community members
- **Local Approver:**
 - Local implementor (varies)
- **No Official State-level Oversight**

Why does this matter?

- Not intended to be just a public health exercise—requires shared ownership, stewardship, and action anchored in diverse cross-sector planning to align and reduce duplication
- New state requirements require Managed Care plans to contribute resources (funding, in-kind staffing) to support CHA/CHIP
- Ongoing discussions occurring to further align non-profit hospitals' required Community Health Needs Assessment (CHNA) cycle

How to get involved

- Contact your local health department/jurisdiction [Directory of Local Health Departments - NACCHO](#)
- Use CHA/CHIP findings to inform other required plans



Juvenile Justice Realignment Block Grant County Plan



What is it?

An annual plan that:

- Describes how the County supports justice-involved youth via facilities, programs, placements, services, reentry strategies, etc. to provide appropriate rehabilitative services

Key Dates

Due Date: Annually by May 1

Subcommittee Meetings: At least two times a year to consider and update the plan

Who is involved?

• Lead:

- County Probation Department – *Annual plan required to receive Juvenile Justice Realignment Block Grant*

• Engaged during Development:

- Local Subcommittees:
Probation, District Attorney's Office, Public Defender's Office, Department of Social Services, Department of Mental Health, Office of Education, etc.
- Community members and people with lived experienced
- Public health
- Approver/State-level Oversight:
 - Office of Youth and Community Restoration (OYCR)

Why does this matter?

- Centers community-based, least restrictive alternatives
- Makes behavioral health coordination explicit
- Often serves as narrative evidence of CalAIM readiness

How to get involved

- Contact your local probation dept <https://oycr.ca.gov/2025-county-plans/>
- Participate in subcommittee or planning discussions
Use the plan to align youth justice and health strategies





Shared Required Plan Elements

1. Data Collection

Behavioral Health
Needs & priorities

CHA/CHIP
Community needs

Juvenile Justice
Youth needs

2. Community Input

Behavioral Health
Stakeholder Input

CHA/CHIP
Community Voice

Juvenile Justice
Youth and
Community voice

3. Activities

Behavioral Health
Funding
allocations &
priorities

CHA/CHIP
Strategies to fund
priorities

Juvenile Justice
Funded programs
& services

4. Quality Metrics

Behavioral Health
Outcomes,
Performance
measures

CHA/CHIP
Outcomes,
improvement
tracking

Juvenile Justice
Outcomes,
Metrics



Deep Dive Into ECM Justice Involved Initiative

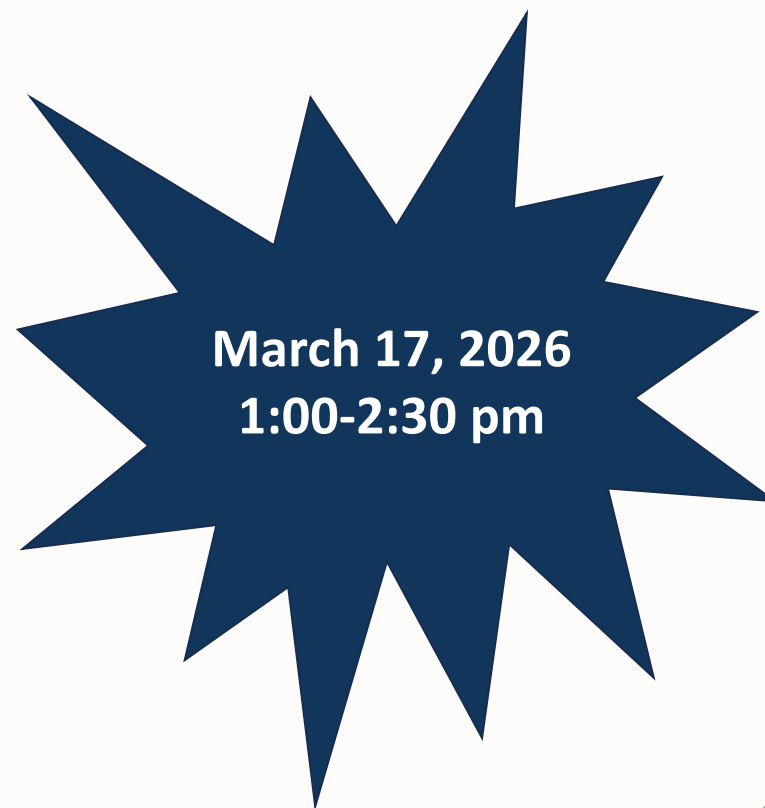


Speaker:

- Ron Kinger, RN MSN
- Senior Manager of Justice Involved Systems, Partnership HealthPlan of California

Who is invited:

- Rural Resilience Innovation Hub participants, county providers and statewide PATH Collaborative participants



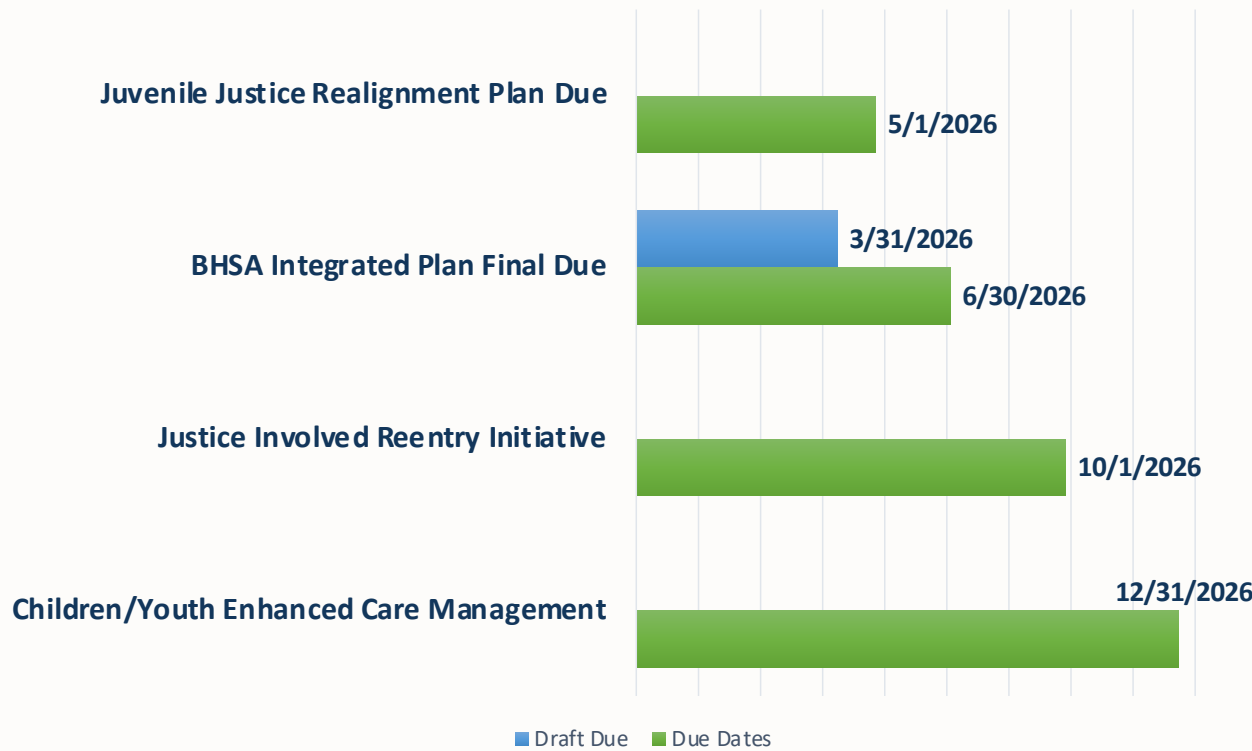
March 17, 2026
1:00-2:30 pm



2026 Strategic Alignment of Due Dates

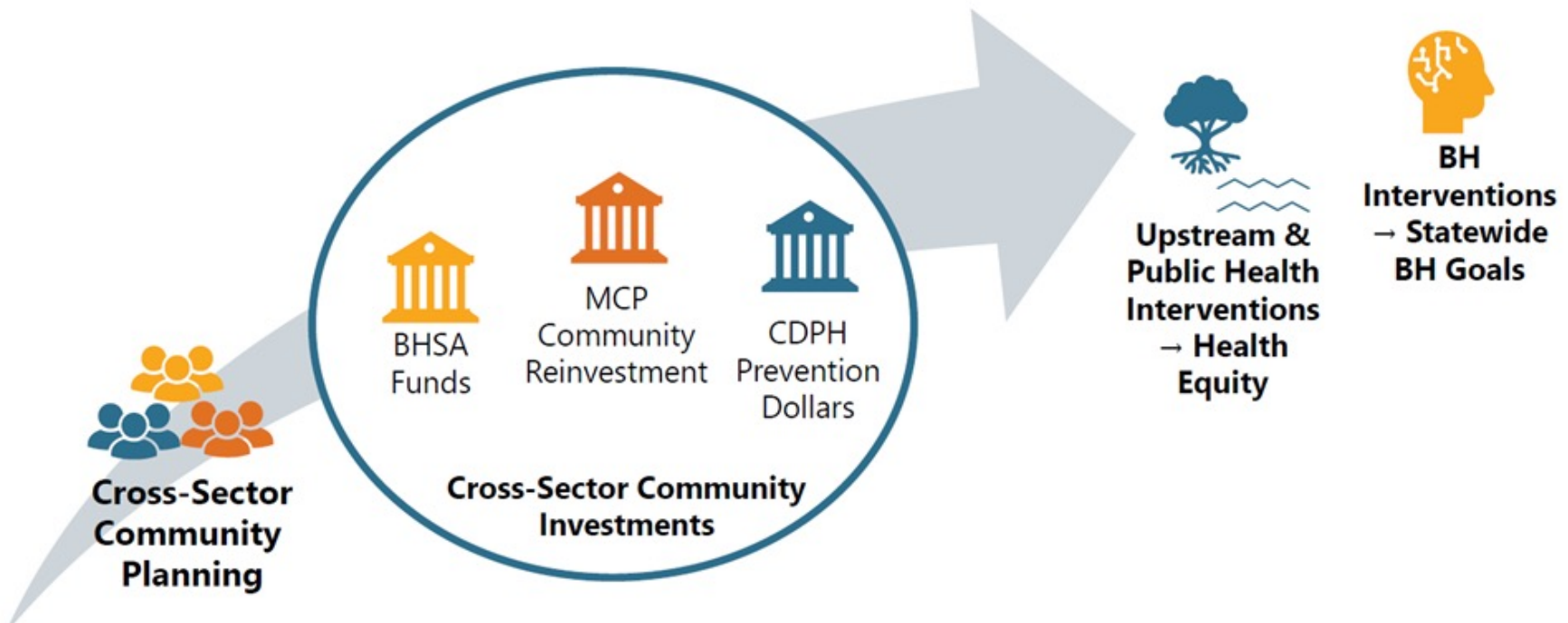


Key County Plans and Deadline Alignment in 2026





An Aligned Future for Multisolving Solutions





Dialogue Groups

- What stood out to you as you heard about these different county plans?
- What other points of alignment do you notice?
- Do you have an example of a plan, process, or partnership to share that used a Multisolving approach?





Harvest

The term harvest refers to the process of capturing the essence, insights, and outcomes of conversations to make meaning, support learning, and enable wise action





Each Group Share Out Reflections and Tips



Menti-Meter Time!



What is one action you will take as a result of today's discussion?

Discuss with the rest of my leadership team who else it would be good to get involved with participating in this group.

Find a data group!

Take the lead for my county

Reach out to my new friends (partners)

Find partners to collaborate with on new programming

Connect with Trish

I will look into Community Health Workers and share with my CHIP steering committee about Probations alignment plan



Wrap Up

PHIL Team



Resources to Support Children and Youth Behavioral Health



EXPANDING ACCESS TO BEHAVIORAL HEALTH RESOURCES IN CALIFORNIA COMMUNITIES

The Children and Youth Behavioral Health Initiative
& The Northern ACEs Collaborative

Looking to reach youth and their families with critical resources to support their behavioral health? Check out the [FREE resources and connections available here](#) and reach out to CMohan2@phi.org to learn more.



Rural Resilience Innovation Hub Resource Doc



[Link to Resource Document](#)





Future RRIH Meeting Dates



- **March 19, 2026** | Leveraging CYBHI to Support Youth and Families
- **April 23, 2026** | Office of Youth and Community Restoration (OYCR) and Least Restrictive Care: A Plain-Language Overview for Counties
- **May 19, 2026** | In person, McConnell Foundation



Mark Your Calendar: May Gathering



In-Person RRIH Meeting
May 19 | 10am – 2pm
McConnell Foundation
Redding, CA 96003

More information coming soon!





We want to hear how today went!

Before you go, we invite you to share your thoughts! Please complete our quick survey using the poll or clicking on the link in the chat.



<https://s.zoom.us/m/bPFbm5oD4>

This floof (🐾) politely demands feedback. 🐾



Thank You!





POPULATION HEALTH INNOVATION LAB

A Program of the PUBLIC HEALTH INSTITUTE

Learn more about PHIL at pophealthinnovationlab.org