

PATH Collaborative Planning and Implementation (CPI) for the Southwest Region

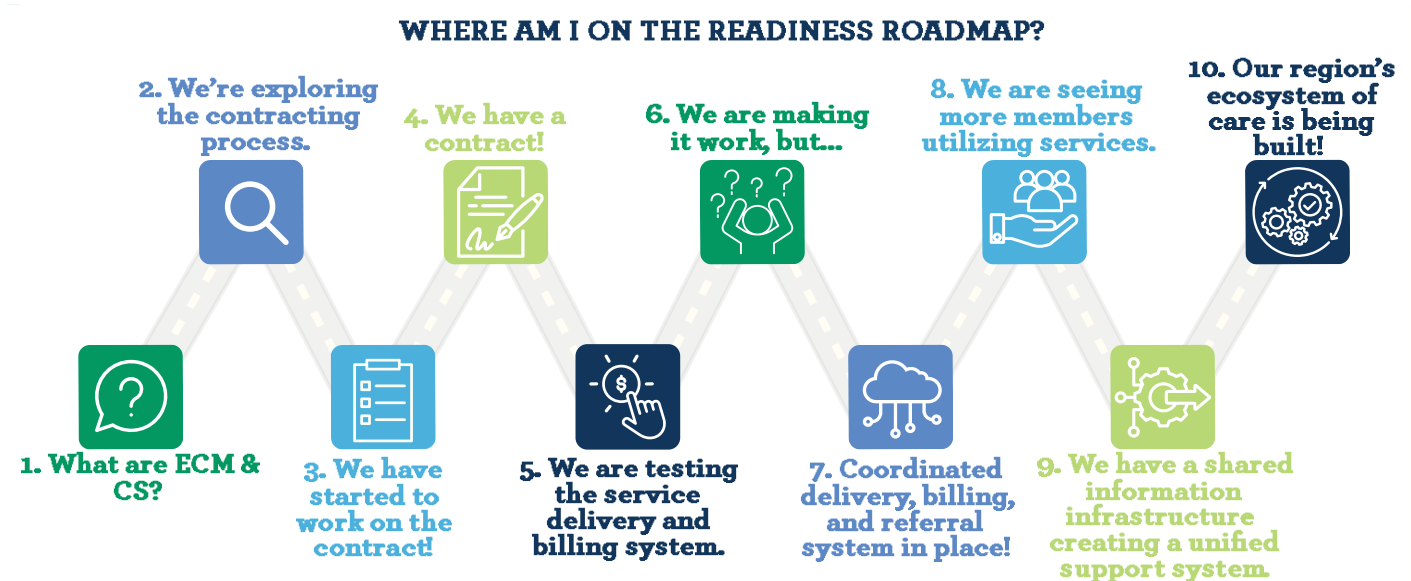
Collaborative Aim and Readiness Roadmap

2025 Collaborative Aim Statement

The Southwest PATH CPI initiative's aim for 2025 is to Enhance the quality and equity of CalAIM Enhanced Care Management (ECM) and Community Supports by facilitating CPI participant advancement along the Readiness Roadmap. This will focus on increasing Medi-Cal member ECM utilization to at least 3% for adults and at least 2% for children by December 31, 2025. Additional efforts will aim to increase overall Medi-Cal member utilization of Community Supports to at least 1% during the same timeframe. The initiative will prioritize addressing service gaps, improving access, and ensuring quality care for target populations.

Readiness Roadmap

By guiding CPI participants along the Readiness Roadmap, the Population Health Innovation Lab (PHIL) supports the effective integration of Enhanced Care Management (ECM) and Community Supports into the local Medi-Cal system. Over the past two years, PHIL has observed that the Southwest collaborative aims to expand their care ecosystems by *partnering with trusted local organizations*. Steps eight through ten on the Readiness Roadmap emphasize care coordination while aligning with long-term goals to improve access to and utilization of high-quality CalAIM ECM and Community Supports.



For more information, resources, and upcoming meeting dates, visit the CPI page on the PHIL website. For additional questions or support, please contact the PHIL team at path@pophealthinnovationlab.org.