



PATH – Collaborative Planning & Implementation (CPI)

Welcome! The Southwest Collaborative Planning Meeting will be starting shortly.

March 20, 2025



POPULATION HEALTH
INNOVATION LAB

A Program of the PUBLIC HEALTH INSTITUTE



PATH – Collaborative Planning & Implementation (CPI)

Southwest Collaborative Planning Meeting

March 20, 2025



POPULATION HEALTH
INNOVATION LAB

A Program of the PUBLIC HEALTH INSTITUTE



Thank you to our sponsors



PUBLIC™
CONSULTING GROUP



The Big Welcome



Introductions and Housekeeping

Who is part of the PHIL team?

Where is the restroom?

Where are the exits?

What time is lunch?

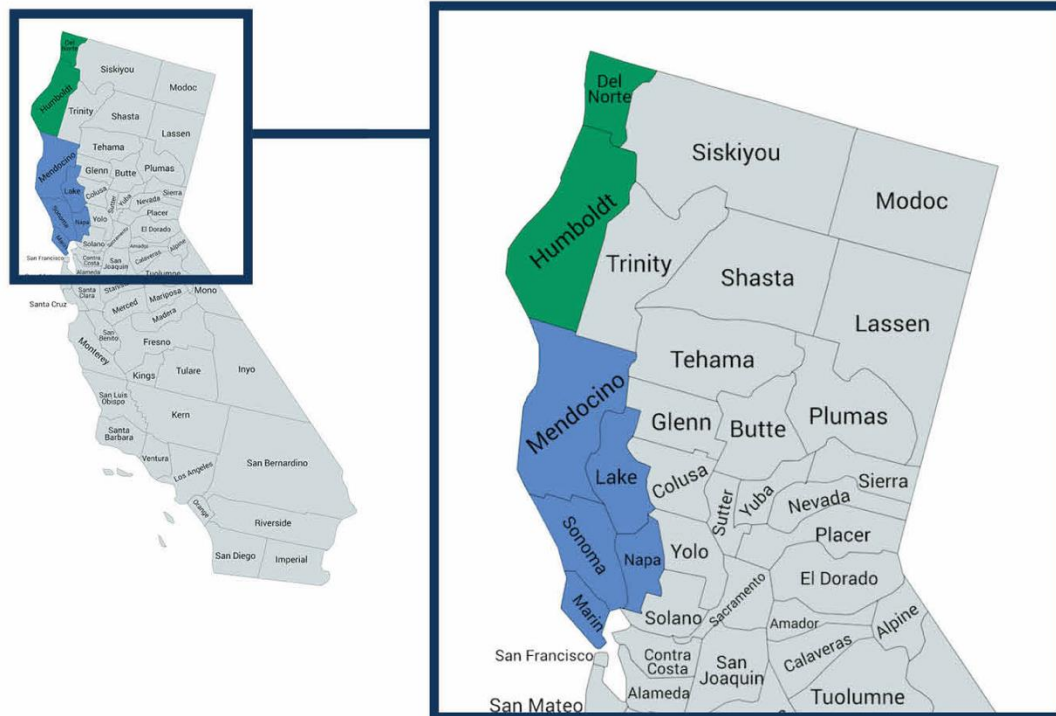




Collaborative Planning & Implementation Overview

Region Counties Supported by PHIL

- Northwest
- Southwest



CPI collaboratives will work together to identify, discuss, and resolve CalAIM implementation issues.

- Learn more about the PATH CPI initiative [here](#).
- Catch up with us! Find meeting minutes, Readiness Roadmap Resources, and registration links on the [PHIL website](#).



Key Collaborative Goals/Drivers for 2025

1. Increase knowledge about CalAIM eligibility requirements to improve provider understanding and increase enrollment into services.
2. Overcome barriers to community-based referrals.
3. Ensure robust and equitable provider networks for each ECM Population of Focus (PoF) and Community Support.
4. Increase awareness of ECM and Community Supports among Medi-Cal members to enhance utilization.
5. Strengthen data sharing among CalAIM providers to improve care coordination.



Agenda for Today

- Welcome, Framing, and Flow of the meeting
- Managed Care Plan Updates from Partnership HealthPlan of California and Kaiser Permanente
- Assessing CalAIM Provider Networks in County Ecosystems of Care
 - Highlights from County Collaboratives
- Networking Lunch
- Successes from the Field:
 - Marin Community Clinics
 - Our Community Our Seniors Corp
- Announcements and Updates
- Feedback and Closing



Objectives

- Increase understanding about county-specific provider networks for CalAIM services and identify strategies to ensure robust and equitable networks of care in Lake, Marin, Mendocino, Napa and Sonoma Counties.
- Highlight best practices and provider experiences screening and engaging ECM Populations of Focus.
- Encourage shared learning and provide a platform for open dialogue with CalAIM providers, local Managed Care Plans, and other local stakeholders to strengthen a culture of collaboration.
- Facilitate an open forum to enhance transparency surrounding challenges, successes, and innovations in CalAIM Enhanced Care Management (ECM) and Community Supports services.



Commitments to Community Inclusivity

Be Present, Brave, and Curious

- Encourage different opinions and respectful disagreement
- Embrace conflict which can deepen our understanding
- Acknowledge the risk speakers take, and value the privilege to learn from one another
- **Make use of opportunities to connect person-to-person**

Create An Inclusive Space

- Invite the unheard voices
- Take responsibility for our own voices (make space)
- **Resist the temptation to only witness the dialogue (take space)**

Invite Anti-Racist Dialogue

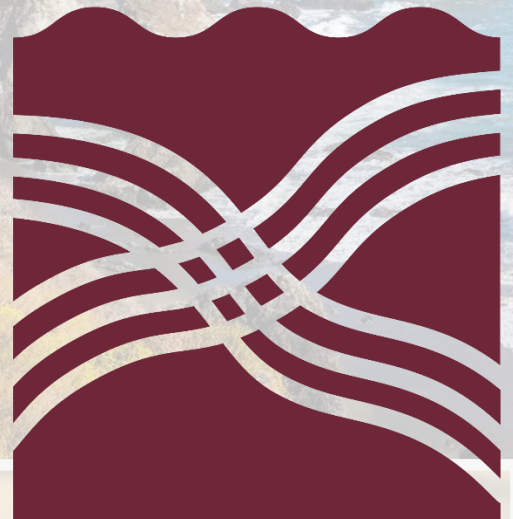
- **Be aware we all have a bias that may impact action; biases are learned and can be unlearned**
- Address racially biased systems and norms
- Recognize the vast and varied lived experiences participants have with racism
- Be intentional about power dynamics and how you exercise your privilege
- Avoid defensive responses when people speak from lived experiences with racism

Be Accountable

- **Foster awareness of unrepresented community members not “in the room”**
- Respect each other’s time - participate fully and prepare for each activity
- Commit to actions that move items beyond discussion
- Practice patience and persistence – we cannot solve everything in a single conversation and will revisit topics that require additional discussion

[Sacramento Briefing: CalAIM Housing Community Supports - California Health Care Foundation](#)

PARTNERSHIP



HEALTHPLAN
of CALIFORNIA
A Public Agency



Managed Care Plan CalAIM Updates

March 2025

Agenda

Closed-Loop Referral Provider Reporting Changes

CalAIM Webpage

Funding Opportunities

Justice Involved ECM Provider Training



Closed-Loop Referral (CLR) Provider Reporting Changes



Closed-Loop Referral (CLR) Provider Reporting Changes

ECM:

File Template: MIF Update

Referral Type (Community vs. Identified by MCP)

File Template: RTF Updates

- Referral status
- Date of referral status
- Reason for CLR closure
- ECM Lead Care Manager's email address

CS:

File Template: ASF Updates (CS)

Referral Type (Community vs. Identified by MCP)





Partnership HealthPlan's CalAIM Webpage





Partnership HealthPlan's CalAIM Webpage

Partnership HealthPlan of California is happy to announce that our new and improved CalAIM (Transforming Medi-Cal) webpage is officially live!

The CalAIM webpage contains several valuable resources on topics such as:

- DHCS
- Enhanced Care Management
- ECM Reporting
- Community Supports
- CS Reporting
- Claims/Billing
- Justice Involved Programs
- Partnership Contacts

PHC CalAIM Webpage:

<https://www.partnershiphp.org/Community/Pages/CalAIM.aspx>





Funding Opportunities

DHCS PATH CITED Funding

PATH CITED Round 4 application window opened on January 6, 2025

The deadline to apply for PATH CITED Round 4 funding has been extended to 11:59 p.m. PST on May 2, 2025

CITED Eligibility

Organizations eligible to apply:

- CBOs
- County, city, or local government agencies
- Federally Qualified Health Centers
- Medi-Cal Tribal and Designee of Indian Health Program
- Others as approved by DHCS.

Round 4 Priorities

PATH CITED Round 4 priorities include:

- ECM/Community Supports in rural counties
- Statewide ECM needs
- Tribal partners and providers
- Statewide Community Supports services needs
- County-specific gaps in ECM by Population of Focus
- County-specific gaps in Community Supports services by Community Support type
- Counties providing Transitional Rent

DHCS PATH CITED Funding

Upcoming PATH Webinars:

- March 13, 2025, 10 a.m. – 11 a.m. PATH CITED Round 4 Office Hours [Registration](#)
- March 20, 2025, 10 a.m. – 11 a.m. PATH CITED Round 4 Office Hours [Registration](#)
- March 27, 2025, 10 a.m. – 11 a.m. PATH CITED Round 4 Office Hours [Registration](#)
- April 10, 2025, 10 a.m. – 11 a.m. PATH CITED Round 4 Office Hours [Registration](#)
- April 17, 2025, 10 a.m. – 11 a.m. PATH CITED Round 4 Office Hours [Registration](#)
- April 24, 2025, 10 a.m. – 11 a.m. PATH CITED Round 4 Office Hours [Registration](#)

- Submissions due May 2, 2025

Resources:

- <https://www.ca-path.com/cited>

2025-2026 IPP Funding

- Partnership is accepting applications for the 2025-2026 CalAIM Grant Program
- Grants available for the following categories:
 - Justice Involved Population of Focus – capacity building
 - Access – projects that support PCP/Specialty access for Members to establish care
 - Rural Focus – capacity building
 - Build capacity and/or expansion of Short-Term Post Transition Housing and/or Short-Term Recuperative Care facility
- Applications due by 5PM on May 16, 2025
 - Approval Announcements will be made in June 2025
 - Funding must be spent by December 31, 2026.
- The budget template and application can be found on the [CalAIM webpage](#) under Additional Resources, questions can be directed to Grants@partnershiphp.org

[Partnership CalAIM Grant Program Application](#)



Justice Involved Enhanced Care Management Provider Training





Justice Involved ECM Webinar

Partnership HealthPlan of California's CalAIM team invites our Justice Involved (JI) Enhanced Care Management (ECM) providers to attend an educational training session

Tuesday, March 25, 2025 2:00 – 3:00 PM

Registration Here:

[Justice Involved ECM Provider Training Registration](#)





Questions

Contacts:

- **ECM@partnershiphp.org**
- **CommunitySupports@partnershiphp.org**
- **ClaimsECMhelpdesk@partnershiphp.org**

Register for upcoming CalAIM Office Hours [here](#)

Kaiser Permanente

Southwest PATH CPI Meeting

March 20, 2025

Complex care certificate | A free training resource from Kaiser Permanente

The complex care certificate will provide essential knowledge, skills, and attitudes required to provide complex care. This training program is rooted in Camden Coalition's core competencies for frontline complex care providers.

What is complex care?

- Complex care improves health and social well-being or individuals with complex needs.
- Complex care addresses the multiple drivers of health and social needs through collaboration in communities and across sectors.

What is the complex care certificate?

- Nine self-paced online courses (13 CEUs) that teach frontline complex care staff how to engage with complex health and social needs.
- Learners will be equipped with tools to build relationships and address gaps in care delivery that apply to all target populations, from pediatrics to older adults.



2,000/ 2,000 Codes Redeemed

All Complex Care Certificate codes have now been redeemed!

- For Southwest CPI region, **69+** Community Members took advantage of the certificate
- Learners represented a wide variety of different kinds of organizations, including:*
 - ECM, CS, CHW providers
 - FQHCs
 - County Staff
 - Native American Health Centers Staff
 - Health systems employees
- **Other High Utilizing Counties/Regions:** San Diego, Sacramento, Los Angeles, Santa Clara, Central Valley (Merced, Fresno)

**At this point in time, we do not currently have the breakdown of utilization by organization type.*

Additional NLE Provider Support | Provider Office Hours

Kaiser Permanente is working with Network Lead Entities (NLEs) to develop a network of community-based ECM, CS, and CHW providers.



NEW: Contracted Providers

Second/Fourth Thursdays

1:00 – 2:00 pm

[Join Meeting Now](#)

NEW: Prospective Providers

First Thursdays of the Month 1:00 - 2:00 pm

Begins Feb 6

[Join Meeting Now](#)

Questions?

ILSCAProviderRelations@ilshealth.com

Phone number: 844-269-3447



Contracted Providers

Tuesdays 3:00 - 4:00 pm

[Register and Join Here](#)

Prospective Providers

Second/Fourth Thursdays of the Month

12:00 - 1:00 pm

[Register and Join Here](#)

Questions?

network@fullcirclehn.org

Phone number: 888-749-8877

NLE: Independent Living Systems (ILS) | Contact Information



General Questions?
ILSCAPProviderRelations@ilshealth.com
844-269-3447

Northern CA

Lorena Ahumada

Lahumada@ilshealth.com

510-960-0980

Counties: Alameda, Amador, Contra Costa, Marin, Napa, Placer, Sacramento, San Francisco, San Joaquin, San Mateo, Santa Clara, Santa Cruz, Solano, Sonoma, Stanislaus, Sutter, Yolo, Yuba

Central CA

Kenya Buford-Shelley

Kshelley@ilshealth.com

559-894-0585

Counties: El Dorado, Fresno, Kings, Madera, Mariposa, Monterey, Tulare

Southern CA

Brian Buller

bbuller@ilshealth.com

213-310-1768

Counties: Imperial, Kern, Los Angeles, Orange, Riverside, San Bernardino, San Diego, Ventura

Submitting ECM & CS Referrals

KP has a no-wrong-door approach for referrals

- Referrals are accepted from any source (members, providers, family, community organizations, etc.)
- Referrals may be placed via email or via phone or KP Health Connect

For providers/organizations submitting referrals to your own ECM/CS/CHW organization, please send the referral form directly to your contracted Network Lead Entity.



Area

All Northern California Counties

All Southern California Counties



Phone
(Member)

1-833-721-6012 (TTY 711)
Monday-Friday (closed major holidays)
8:30 a.m. to 5:00 p.m.

1-866-551-9619 (TTY 711)
Monday-Friday (closed major holidays)
8:30 a.m. to 5:00 p.m.



Email
(Counties/CBOs)

Send completed [referral form](#) to
REGMCDURNS-KPNC@kp.org with the
subject line “ECM Referral” or “CS Referral” or
“CHW services request”

Send completed [referral form](#) to
RegCareCoordCaseMgmt@kp.org with the
subject line “ECM Referral” or “CS Referral” or
“CHW services request”



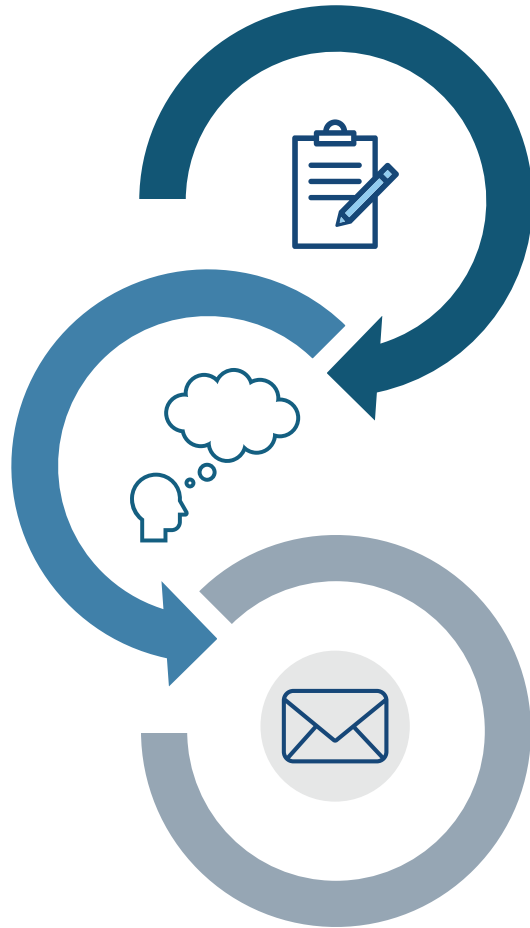
Email
(NLE Contracted
providers submitting
referrals to their own
organization)

Send completed self [referral form](#) to contracted
Network Lead Entity

Send completed self [referral form](#) to contracted
Network Lead Entity

Process for Community Providers to Refer to Own Organization

If you are a **contracted** community provider and want to refer a KP member **directly** to your **ECM/CS/CHW** organization, please send the referral directly to your **contracted Network Lead Entity** rather than KP.



Email ECM/CS/CHW referral directly to contracted NLE:

- Full Circle Health Network: referral@fullcirclehn.org
- ILS: kpreferrals@ilshealth.com
- Partners in Care Foundation:
 - ECM: ECM@picf.org
 - Personal Care/Non-Medical Respite: privateduty@picf.org
 - Housing Trio: HousingCS@picf.org

Send any questions regarding self-referrals to your contracted NLE

For issue resolution, email Network Lead Entity and cc medi-cal-externalengagement@kp.org

Streamlined Authorization for Enhanced Care Management (ECM)

Below summarizes Kaiser Permanente's streamlined ECM authorization process.

Details

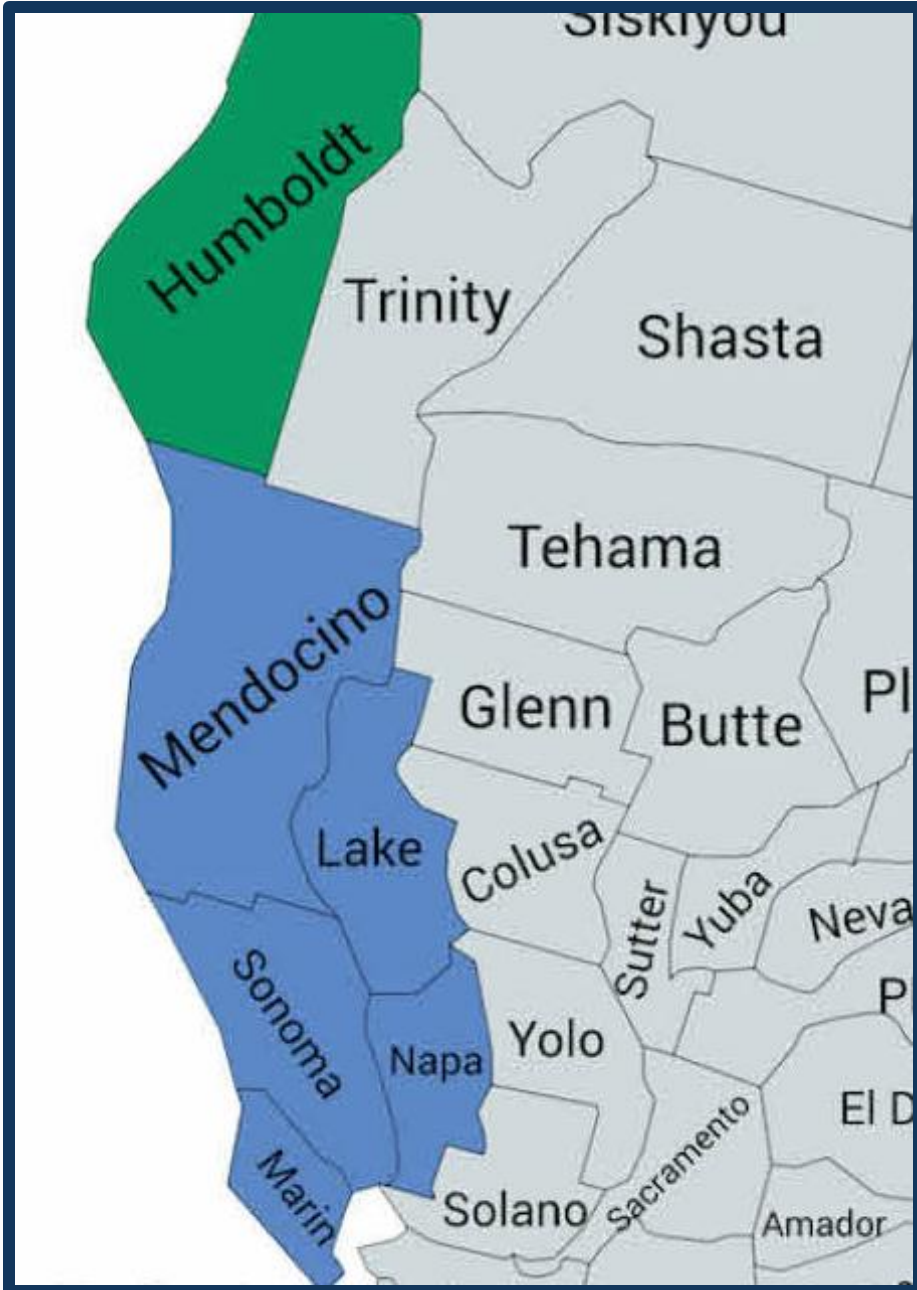
- Streamlined Authorization is **only** for ECM providers who are currently contracted with Network Lead Entities (NLEs).
- Streamlined Authorization applies **only** to ECM, not CS or CHW.
- Providers can begin working with members right away, but they must submit an ECM referral through their NLE no later than 5 working days before the end of the streamlined authorization period.
- Total Streamlined Authorization period is 30 days or up to the date KP makes and communicates the authorization, whichever comes first.
- Providers will be paid for the 30-day ECM authorization period.
- Streamlined Authorizations route back to the original provider and ECM Lead Care Manager through the NLE.

Do's & Don'ts

- **DO** submit an ECM referral through contracted NLEs.
- **DO** indicate "Streamlined Authorization" on the referral form
- **DO** add the first date of start of services to completed referral.
- **DO** submit an ECM referral no later than 5 business days before the Streamlined Authorization period ends.
- **DON'T** submit a Streamlined Authorization for CS or CHW; the Streamlined Authorization is for ECM only.

How To Submit

- Email the ECM referral directly to the contracted NLE.
 - Full Circle Health Network: referral@fullcirclehn.org
 - Independent Living Systems: kpreferrals@ilshealth.com
 - Partners in Care Foundation: ECM@picf.org
- Send any questions directly to the contracted NLE.
- To resolve issues, email the NLE and cc: medi-cal-externalengagement@kp.org



Human Map



Who is standing near you that you already collaborate with (besides your own organization)?



Who is farther away that you would like to connect with?



**Step towards someone you've
never worked with before and
introduce yourself!**



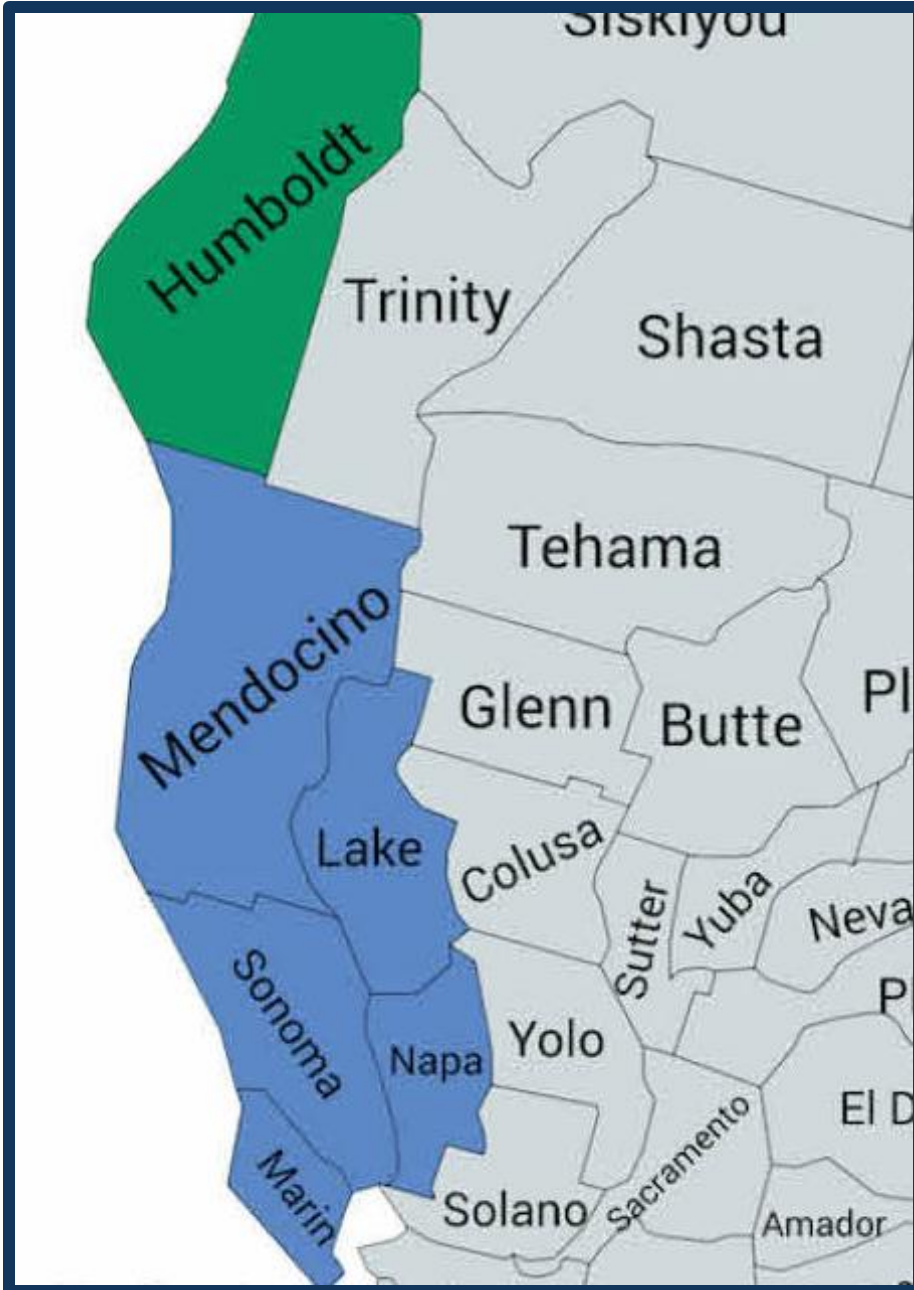
Extra Credit:
**Share where you are in your
implementation and an offering
or request.**



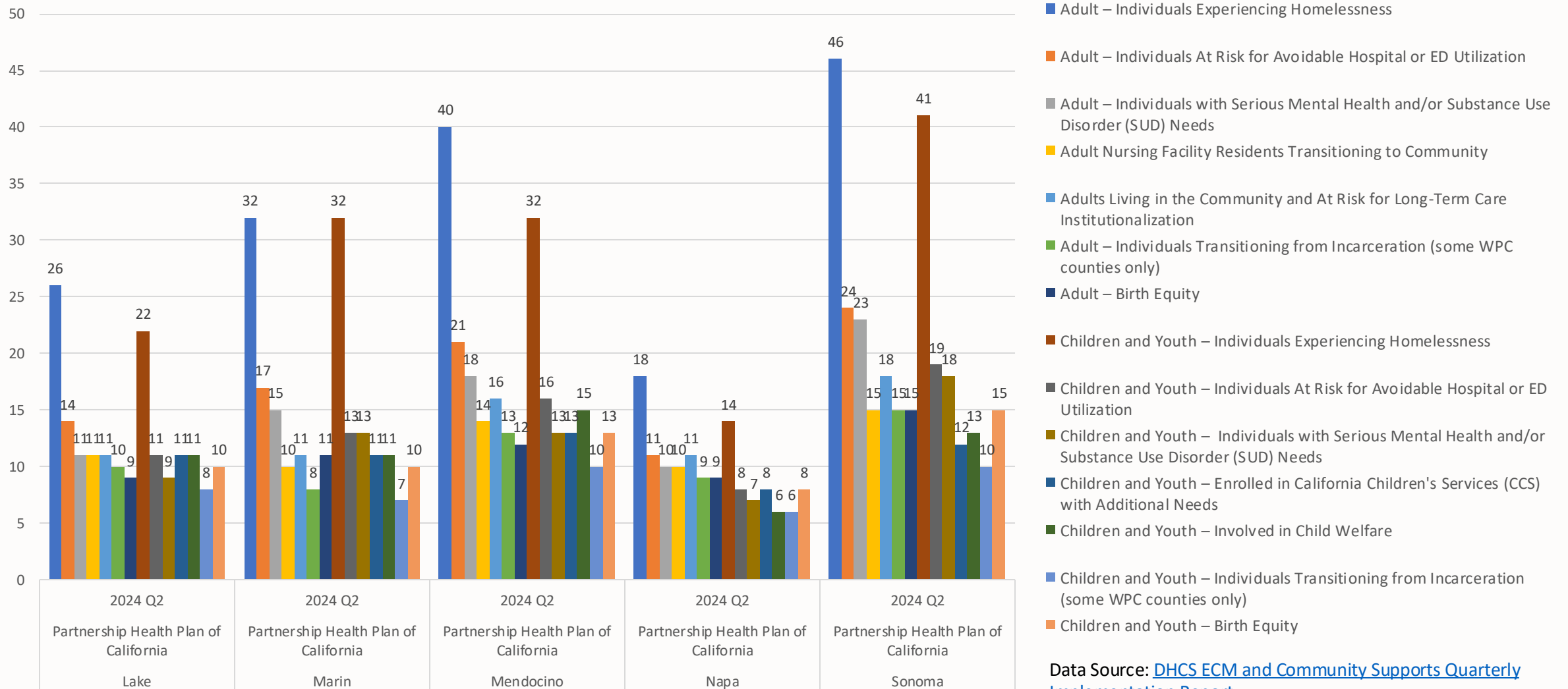
Elevating the Expertise of Local Partners

Local approaches in the CalAIM implementation journey.

County Specific Collaborations in Lake, Mendocino, Marin, Napa, and Sonoma

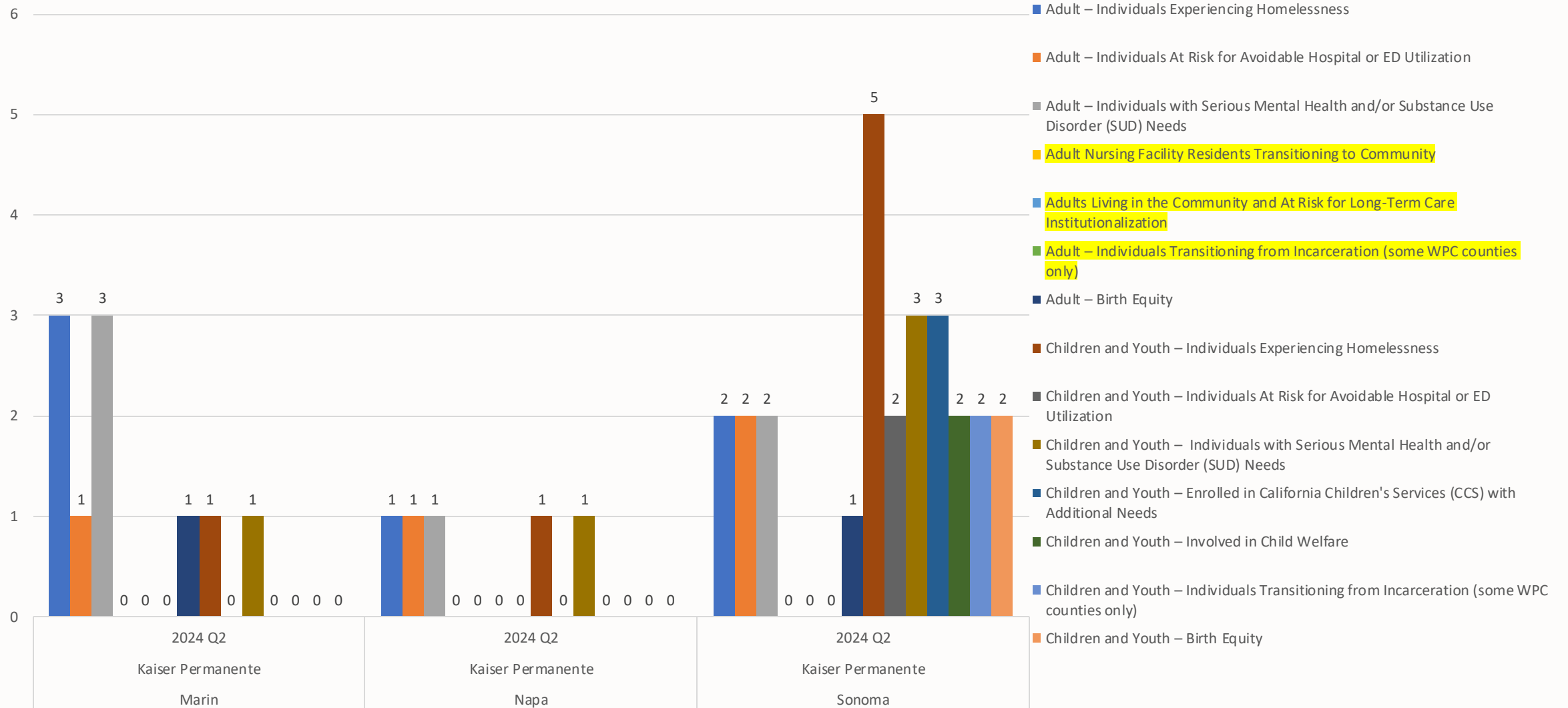


Southwest ECM Contracted Providers- Partnership Health Plan



Data Source: [DHCS ECM and Community Supports Quarterly Implementation Report](#)

Southwest ECM Contracted Providers -Kaiser Permanente





ECM Contracted Provider Details by County

- County Specific Questions
 - Errors, concerns, inaccuracies?
 - Obvious gaps in PoFs?
 - Strategies to strengthen networks?
 - Referral opportunities?
- Provider Network Chart
 - Google docs link





Box Lunch Menu – Havana Catering

ROPA VIEJA

Braised Beef with Onions, Peppers, and Tomato,
Black Beans, Sofrito Rice

CHICKEN ROPA VIEJA

Braised Chicken with Onions, Peppers, and
Tomato, Black Beans, Sofrito Rice

CHICKEN MANGO SALAD

Grilled Chicken Breast, Baby Spinach, Mango
Salsa, Avocado, Queso Fresco, Spiced Pecans,
Mango Vinaigrette (cheese, nuts, & dressing
on the side)

CHIMICHURRI STEAK

Grilled Steak, Chimichurri Sauce, Poblano Mac
& Cheese, Corn Sauté

CAULIFLOWER CHIMICHURRI

Grilled Cauliflower, Chimichurri Sauce, Black
Beans, Sofrito Rice

TOFU MANGO SALAD

Seared Tofu, Baby Spinach, Mango Salsa,
Avocado, Queso Fresco, Spiced Pecans,
Mango Vinaigrette (cheese, nuts, & dressing
on the side)

Dietary restrictions and accommodations are indicated on the boxed lunches.

Harvest





ECM Utilization Rates by County

Partnership HealthPlan of CA

| County | Last Date In the Reporting Period | Average MCP Members in the Last 12 Months of the Reporting Period - Adults | Number of Unique Members Who Received ECM in the Last 12 Months of the Reporting Period - Adults | ECM Utilization rate in the last 12 Months of the Reporting Period - Adults | Average MCP Members Under Age 21 in the Last 12 Months of the Reporting Period | Number of Members Under Age 21 Enrolled in ECM At Any Point in the Last 12 Months of the Reporting Period | ECM Utilization rate in the Last 12 Months of the Reporting Period - Under Age 21 |
|-----------|-----------------------------------|--|--|---|--|---|---|
| Lake | 6/30/24 | 35,011 | 452 | <u>1.29%</u> | 12,823 | 45 | <u>0.35%</u> |
| Marin | 6/30/24 | 49,191 | 718 | <u>1.46%</u> | 17,315 | 173 | <u>1.00%</u> |
| Mendocino | 6/30/24 | 41,552 | 751 | <u>1.81%</u> | 15,486 | 66 | <u>0.43%</u> |
| Napa | 6/30/24 | 31,233 | 419 | <u>1.34%</u> | 12,356 | 46 | <u>0.37%</u> |
| Sonoma | 6/30/24 | 121,375 | 1,764 | <u>1.45%</u> | 45,628 | 168 | <u>0.37%</u> |

Data Source: [DHCS ECM and Community Supports Quarterly Implementation Report](#)



ECM Utilization Rates by County

Kaiser Permanente

| County | Last Date In the Reporting Period | Average MCP Members in the Last 12 Months of the Reporting Period - Adults | Number of Unique Members Who Received ECM in the Last 12 Months of the Reporting Period - Adults | ECM Utilization rate in the last 12 Months of the Reporting Period - Adults | Average MCP Members Under Age 21 in the Last 12 Months of the Reporting Period | Number of Members Under Age 21 Enrolled in ECM At Any Point in the Last 12 Months of the Reporting Period | ECM Utilization rate in the Last 12 Months of the Reporting Period - Under Age 21 |
|--------|-----------------------------------|--|--|---|--|---|---|
| Marin | 6/30/24 | 3,597 | 52 | <u>1.45%</u> | 1,278 | 11 | <u>0.86%</u> |
| Napa | 6/30/24 | 3,855 | 16 | <u>0.42%</u> | 1,877 | | <u>0.00%</u> |
| Sonoma | 6/30/24 | 12,737 | 79 | <u>0.62%</u> | 5,849 | 22 | <u>0.38%</u> |



Children and Youth Populations of Focus

Key Takeaways from February

Gaps in providers serving children and youth, include:

- High ratio of non-local providers
- Questions about legal requirements for serving minors
- Administrative confusion, such as TAR process workflows and the age at which a child can consent
- Challenges in coordinating with existing systems, such as foster care



Children ECM Utilization Breakdown- Lake

| County | MCP | Last Date In the Reporting Period | Average MCP Members Under Age 21 in the Last 12 Months of the Reporting Period | # of Members Under Age 21 Enrolled in ECM At Any Point in the Last 12 Months of the Reporting Period | % of MCP Members Under Age 21 Who Were Enrolled in ECM in the Last 12 Months of the Reporting Period | Quarter | Children – Homeless | Children – At Risk for Hospital/ED | Children – Serious Mental Health/SUD | Children – CCS with Additional Needs | Children – Child Welfare | Children – Justice-Involved | Child – Birth Equity |
|--------|-----|-----------------------------------|--|--|--|---------|---------------------|------------------------------------|--------------------------------------|--------------------------------------|--------------------------|-----------------------------|----------------------|
| Lake | PHC | 6/30/24 | 12,823 | 45 | 0.35 | 2024 Q2 | 21 | 15* | | 0* | | 0* | |
| | | | | | | 2024 Q1 | 23* | * | 0* | | 0 | 0 | |
| | | | | | | 2023 Q4 | 12* | * | 0* | | 0 | 0 | |
| | | | | | | 2023 Q3 | * | | 0 | 0 | 0 | 0 | 0 |



Children ECM Utilization Breakdown-Mendocino

| County | MCP | Last Date In the Reporting Period | Average MCP Members Under Age 21 in the Last 12 Months of the Reporting Period | # of Members Under Age 21 Enrolled in ECM At Any Point in the Last 12 Months of the Reporting Period | % of MCP Members Under Age 21 Who Were Enrolled in ECM in the Last 12 Months of the Reporting Period | Quarter | Children – Homeless | Children – At Risk for Hospital/ED | Children – Serious Mental Health/SUD | Children – CCS with Additional Needs | Children – Child Welfare | Children – Justice-Involved | Child – Birth Equity |
|-----------|-----|-----------------------------------|--|--|--|---------|---------------------|------------------------------------|--------------------------------------|--------------------------------------|--------------------------|-----------------------------|----------------------|
| Mendocino | PHC | 6/30/24 | 15,486 | 66 | 0.43 | 2024 Q2 | 25 | 22 | 13* | * | | | 0* |
| | | | | | | 2024 Q1 | 15* | * | | 0* | | 0* | |
| | | | | | | 2023 Q4 | 12* | * | | 0* | | 0 | 0 |
| | | | | | | 2023 Q3 | * | * | * | 0* | | 0 | 0 |



Children ECM Utilization Breakdown- Marin

| County | MCP | Last Date In the Reporting Period | Average MCP Members Under Age 21 in the Last 12 Months of the Reporting Period | # of Members Under Age 21 Enrolled in ECM At Any Point in the Last 12 Months of the Reporting Period | % of MCP Members Under Age 21 Who Were Enrolled in ECM in the Last 12 Months of the Reporting Period | Quarter | Children – Homeless | Children – At Risk for Hospital/ED | Children – Serious Mental Health/SUD | Children – CCS with Additional Needs | Children – Child Welfare | Children – Justice-Involved | Child – Birth Equity |
|--------|-----|-----------------------------------|--|--|--|---------|---------------------|------------------------------------|--------------------------------------|--------------------------------------|--------------------------|-----------------------------|----------------------|
| Marin | KP | 6/30/24 | 1,278 | 11 | 0.86 | 2024 Q2 | * | 0* | | 0* | | 0 | 0 |
| | | | | | | 2024 Q1 | * | 0* | | 0* | | 0 | 0 |
| Marin | PHC | 6/30/24 | 17,315 | 173 | 1 | 2024 Q2 | 49 | 41 | 28 | 23* | | 0* | |
| | | | | | | 2024 Q1 | 43 | 32 | 31 | 20* | | 0 | 0 |
| | | | | | | 2023 Q4 | 74 | 13 | 21 | 15 | 11 | 0 | 0 |
| | | | | | | 2023 Q3 | 85* | | 14 | 12* | | 0 | 0 |



Children ECM Utilization Breakdown- Sonoma

| County | MCP | Last Date In the Reporting Period | Average MCP Members Under Age 21 in the Last 12 Months of the Reporting Period | # of Members Under Age 21 Enrolled in ECM At Any Point in the Last 12 Months of the Reporting Period | % of MCP Members Under Age 21 Who Were Enrolled in ECM in the Last 12 Months of the Reporting Period | Quarter | Children – Homelessness | Children – At Risk for Hospital/ED | Children – Serious Mental Health/SUD | Children – CCS with Additional Needs | Children – Child Welfare | Children – Justice-Involved | Child – Birth Equity |
|--------|-----|-----------------------------------|--|--|--|---------|-------------------------|------------------------------------|--------------------------------------|--------------------------------------|--------------------------|-----------------------------|----------------------|
| Sonoma | KP | 6/30/24 | 5,849 | 22 | 0.38 | 2024 Q2 | * | * | * | * | * | 0 | 0 |
| | | | | | | 2024 Q1 | 0 | * | * | * | * | 0 | 0 |
| Sonoma | PHC | 6/30/24 | 45,628 | 168 | 0.37 | 2024 Q2 | 38 | 17 | 18 | * | * | 0 | * |
| | | | | | | 2024 Q1 | 38 | 17 | 15 | * | * | 0 | 0 |
| | | | | | | 2023 Q4 | 32 | * | 38 | * | 42 | * | 0 |
| | | | | | | 2023 Q3 | * | * | 11 | * | * | 0 | 0 |



Pediatric Enhanced Care Management Team

✦ **Evelyn Aguiar**
Complex Care Clinical
Supervisor Youth and
Families

✦ **Yaneth Cuervo**
Pediatrics Team
Program Coordinator

✦ **Rocsana E. De
Leon Cifuentes**
Pediatrics Case
Manager



Clinic Pre-Screening Script

Referred by:

Medical care and specialists:

Last BP:

Siblings:

Housing (VISPDAT if applicable):

Income:

Food:

Transportation:

Behavioral Health:

Family receives services from any other community organizations:

Child School:

Child receive therapy at school:

What do you feel family needs support around if anything:

Is there anything we haven't talked that is important for me to know:



Questions?



Adult ECM Utilization Breakdown- Lake

| County | MCP | Last Date In the Reporting Period | Average MCP Members in the Last 12 Months of the Reporting Period | # Unique Members Who Received ECM in the Last 12 Months of the Reporting Period | % MCP Members Who Were Enrolled in ECM in the Last 12 Months of the Reporting Period | Quarter | Adult – Homeless | Adult – At Risk for Hospital/ED | Adult – Serious Mental Health/SUD | Adult – Nursing Facility Transition | Adult – At Risk for LTC | Adult – Justice-Involved | Adult – Birth Equity |
|--------|-----|-----------------------------------|---|---|--|---------|------------------|---------------------------------|-----------------------------------|-------------------------------------|-------------------------|--------------------------|----------------------|
| Lake | PHC | 6/30/24 | 35,011 | 452 | 1.29 | 2024 Q2 | 161 | 59 | 126* | * | * | | 11 |
| | | | | | | 2024 Q1 | 133 | 40 | 85* | | 0* | * | |
| | | | | | | 2023 Q4 | 130 | 41 | 86* | * | * | | 0 |
| | | | | | | 2023 Q3 | 59 | 26 | 38* | | 0 | 0 | 0 |



Adult ECM Utilization Breakdown-Mendocino

| County | MCP | Last Date In the Reporting Period | Average MCP Members in the Last 12 Months of the Reporting Period | # Unique Members Who Received ECM in the Last 12 Months of the Reporting Period | % MCP Members Who Were Enrolled in ECM in the Last 12 Months of the Reporting Period | Quarter | Adult – Homelessness | Adult – At Risk for Hospital/ED | Adult – Serious Mental Health/SUD | Adult – Nursing Facility Transition | Adult – At Risk for LTC | Adult – Justice-Involved | Adult – Birth Equity |
|-----------|-----|-----------------------------------|---|---|--|---------|----------------------|---------------------------------|-----------------------------------|-------------------------------------|-------------------------|--------------------------|----------------------|
| Mendocino | PHC | 6/30/24 | 41,552 | 751 | 1.81 | 2024 Q2 | 145 | 150 | 312* | | 17* | | * |
| | | | | | | 2024 Q1 | 172 | 158 | 306* | | 18* | | * |
| | | | | | | 2023 Q4 | 208 | 158 | 308* | | 11* | | 0 |
| | | | | | | 2023 Q3 | 183 | 116 | 245* | * | * | | 0 |



Adult ECM Utilization Breakdown-Marin

| County | MCP | Last Date In the Reporting Period | Average MCP Members in the Last 12 Months of the Reporting Period | # Unique Members Who Received ECM in the Last 12 Months of the Reporting Period | % MCP Members Who Were Enrolled in ECM in the Last 12 Months of the Reporting Period | Quarter | Adult – Homeless | Adult – At Risk for Hospital/ED | Adult – Serious Mental Health/SUD | Adult – Nursing Facility Transition | Adult – At Risk for LTC | Adult – Justice-Involved | Adult – Birth Equity |
|--------|-----|-----------------------------------|---|---|--|---------|------------------|---------------------------------|-----------------------------------|-------------------------------------|-------------------------|--------------------------|----------------------|
| Marin | KP | 6/30/24 | 3,597 | 52 | 1.45 | 2024 Q2 | * | * | 30 | 0 | 0 | 0 | * |
| | | | | | | 2024 Q1 | * | * | 20 | 0 | 0 | 0 | * |
| Marin | PHC | 6/30/24 | 49,191 | 718 | 1.46 | 2024 Q2 | 182 | 93 | 126* | | 25 | 0 | * |
| | | | | | | 2024 Q1 | 186 | 65 | 111* | * | | 0 | * |
| | | | | | | 2023 Q4 | 195 | 71 | 136 | 11* | | 0 | 0 |
| | | | | | | 2023 Q3 | 186 | 89 | 161* | * | * | | 0 |



Adult ECM Utilization Breakdown- Napa

| County | MCP | Last Date In the Reporting Period | Average MCP Members in the Last 12 Months of the Reporting Period | # Unique Members Who Received ECM in the Last 12 Months of the Reporting Period | % MCP Members Who Were Enrolled in ECM in the Last 12 Months of the Reporting Period | Quarter | Adult – Homeless | Adult – At Risk for Hospital/ED | Adult – Serious Mental Health/SUD | Adult – Nursing Facility Transition | Adult – At Risk for LTC | Adult – Justice-Involved | Adult – Birth Equity |
|--------|-----|-----------------------------------|---|---|--|---------|------------------|---------------------------------|-----------------------------------|-------------------------------------|-------------------------|--------------------------|----------------------|
| Napa | KP | 6/30/24 | 3,855 | 16 | 0.42 | 2024 Q2 | * | 0* | | 0* | | 0 | 0 |
| | | | | | | 2024 Q1 | * | 0* | | 0 | 0 | 0 | 0 |
| Napa | PHC | 6/30/24 | 31,233 | 419 | 1.34 | 2024 Q2 | 105 | 160 | 123* | | 31* | * | |
| | | | | | | 2024 Q1 | 81 | 135 | 104* | | 32* | | 0 |
| | | | | | | 2023 Q4 | 100 | 149 | 116* | | 33* | | 0 |
| | | | | | | 2023 Q3 | 130 | 146 | 111* | | 27* | | 0 |



Adult ECM Utilization Breakdown- Sonoma

| County | MCP | Last Date In the Reporting Period | Average MCP Members in the Last 12 Months of the Reporting Period | # Unique Members Who Received ECM in the Last 12 Months of the Reporting Period | % MCP Members Who Were Enrolled in ECM in the Last 12 Months of the Reporting Period | Quarter | Adult – Homeless | Adult – At Risk for Hospital/ED | Adult – Serious Mental Health/SUD | Adult – Nursing Facility Transition | Adult – At Risk for LTC | Adult – Justice-Involved | Adult – Birth Equity |
|--------|-----|-----------------------------------|---|---|--|---------|------------------|---------------------------------|-----------------------------------|-------------------------------------|-------------------------|--------------------------|----------------------|
| Sonoma | KP | 6/30/24 | 12,737 | 79 | 0.62 | 2024 Q2 | 11 | 17 | 26 | 0 | 0 | 0* | |
| | | | | | | 2024 Q1 | * | * | 16 | 0 | 0 | 0* | |
| Sonoma | PHC | 6/30/24 | 121,375 | 1,764 | 1.45 | 2024 Q2 | 487 | 216 | 413 | 22* | * | * | |
| | | | | | | 2024 Q1 | 380 | 180 | 307 | 16* | | 18* | |
| | | | | | | 2023 Q4 | 390 | 132 | 425 | 19* | | 20 | 0 |
| | | | | | | 2023 Q3 | 358 | 156 | 495* | * | * | | 0 |



Elevating the Expertise of Local Partners

**Local approaches in the CalAIM
implementation journey.**

Welcome:

Camille Cummins

Founder, President, & Director

Our Community Our Seniors Corp.





Questions?



Upcoming PATH CPI Events

Our next CPI regional meeting is virtual. We hope to see you there!

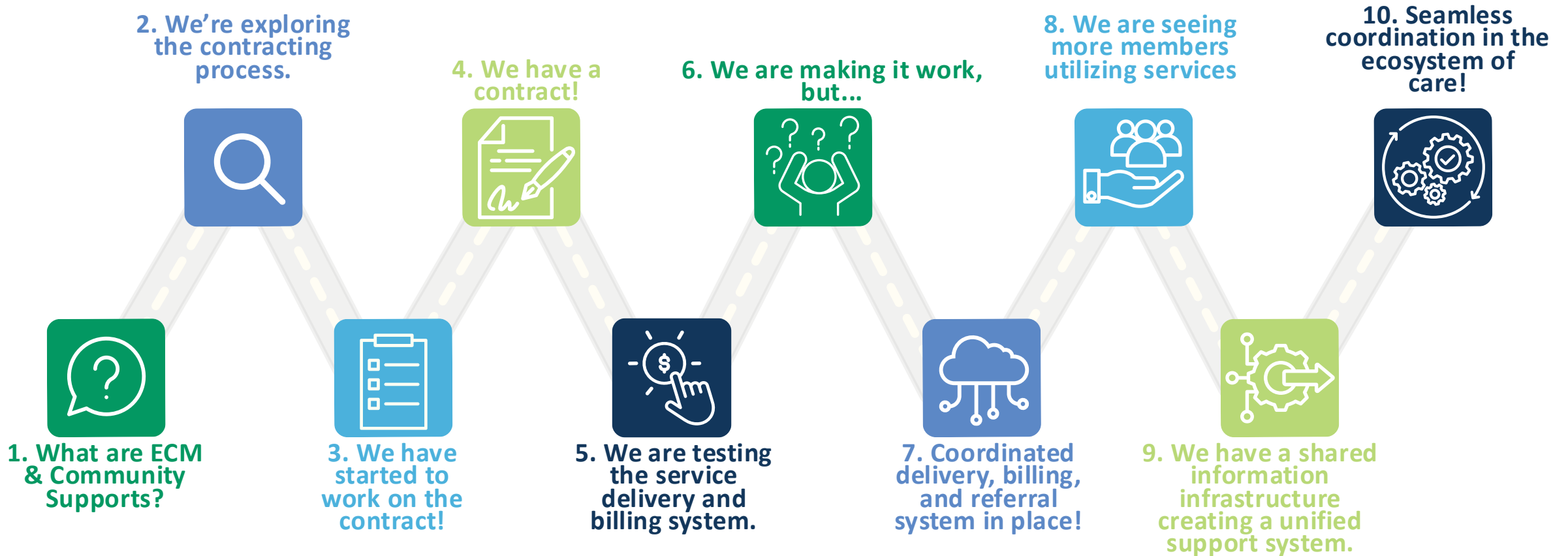
Thursday, April 17th

11:00 – 12:30 pm

[New! RSVP Link](#)

Readiness Roadmap

Where am I on the Readiness Roadmap?





Post-Event Evaluation

To continue improving our work as your CPI Facilitator, PHIL kindly asks that you complete the brief survey that pops up in a new tab at the close of the meeting. Your feedback ensures quality improvement and will inform planning and activities through the evolution of the collaborative.



<https://bit.ly/3Fvyqs2>



Thank You!

Feel free to contact our PATH CPI team

Kathryn Stewart

Director of Learning and Action

kastewart@phi.org

Tammy Chandler

PATH CPI Policy & Quality

Improvement Manager

tchandler@phi.org

Zachary Ray

Consultant

zray@nativespiritconsulting.com

Jessica Sanchez

Program Associate II

jsanchez2@phi.org

Megan Kenney

Program Specialist

mkenney@phi.org

Stefani Hartsfield

Consultant

stefani@hartsfieldhealth.com

For general inquiries, please feel free to email path@pophealthinnovationlab.org

Thank you!



Enhanced Care Management (ECM) Providers in Marin, Napa, & Sonoma County

Organizations listed have executed contracts with KP as of **December 13, 2024**

Other providers are welcomed to apply to join our provider network via the NLEs.



| Provider | Services/Populations of Focus | Phone Number | Counties Served |
|--|--|--------------|---------------------|
| Aldea, Inc. | Children & Youth - Individuals at-risk for IP and ED Children & Youth - Individuals with SMI/SUD Children & Youth - Individuals transitioning from incarceration Children & Youth - Involved in Child Welfare | 707-224-8266 | Napa, Sonoma |
| Alternative Family Services | Children & Youth - Individuals with SMI/SUD Children & Youth - Individuals transitioning from incarceration Children & Youth - Involved in Child Welfare | 707-576-7700 | Sonoma |
| CityServ | TBA | 661-558-4441 | Marin, Napa, Sonoma |
| Community Support Network, DBA Housing and Wellness Program | Adults - Individuals Experiencing Homelessness Adults - Individuals at-risk for IP and ED Adults - Individuals with SMI/SUD Adults - Individuals transitioning from incarceration (Adult) Adults - living in the community at-risk for LTC Children & Youth - Individuals Experiencing Homelessness Children & Youth - Individuals at-risk for IP and ED Children & Youth - Individuals with SMI/SUD Children & Youth - Individuals transitioning from incarceration | 707-757-7892 | Marin, Sonoma |
| Independent Living Systems | Adults - Individuals Experiencing Homelessness Adults - Individuals at-risk for IP and ED Adults - Individuals with SMI/SUD Adults - living in the community at-risk for LTC Adults - NF residents transitioning to the community Adults - Individuals with Intellectual or Developmental Disabilities Adults -Pregnant and Postpartum Individuals at-risk for Adverse Perinatal Children & Youth - Individuals Experiencing Homelessness Children & Youth - Individuals at-risk for IP and ED Children & Youth - Individuals with SMI/SUD Children & Youth - Enrolled in California Children's Services (CCS) or WCM w/needs Children & Youth - Involved in Child Welfare Children & Youth - Individuals with Intellectual or Developmental Disabilities (I/DD) Children & Youth - Pregnant and Postpartum Individuals at-risk for Adverse Perinatal | 844-320-5182 | Marin, Napa, Sonoma |
| J&M Homecare Services, LLC | Adults - Individuals at-risk for IP and ED Adults - living in the community at-risk for LTC Adults - NF residents transitioning to the community | 925-552-6500 | Marin, Napa, Sonoma |

Enhanced Care Management (ECM) Providers in Marin, Napa, & Sonoma County

Organizations listed have executed contracts with KP as of **December 13, 2024**

Other providers are welcomed to apply to join our provider network via the NLEs.



| Provider | Services/Populations of Focus | Phone Number | Counties Served |
|--|--|--------------|---------------------|
| Keystone Therapy and Training Services, Inc | Adults - Individuals Experiencing Homelessness Adults - Individuals at-risk for IP and ED Adults - Individuals with SMI/SUD Adults - living in the community at-risk for LTC Adults - NF residents transitioning to the community Adults - Individuals with Intellectual or Developmental Disabilities Adults -Pregnant and Postpartum Individuals at-risk for Adverse Perinatal Children & Youth - Individuals Experiencing Homelessness Children & Youth - Individuals at-risk for IP and ED Children & Youth - Individuals with SMI/SUD Children & Youth - Involved in Child Welfare Children & Youth - Individuals with Intellectual or Developmental Disabilities (I/DD) Children & Youth - Pregnant and Postpartum Individuals at-risk for Adverse Perinatal | 707-327-0909 | Marin, Napa, Sonoma |
| Mendona Health Alliance | Adults - Individuals Experiencing Homelessness Adults - Individuals at-risk for IP and ED Adults - Individuals with SMI/SUD Adults - living in the community at-risk for LTC Adults - NF residents transitioning to the community Adults - Individuals with Intellectual or Developmental Disabilities Adults -Pregnant and Postpartum Individuals at-risk for Adverse Perinatal Children & Youth - Individuals Experiencing Homelessness Children & Youth - Individuals at-risk for IP and ED Children & Youth - Individuals with SMI/SUD Children & Youth - Enrolled in California Children's Services (CCS) or WCM w/needs Children & Youth - Involved in Child Welfare Children & Youth - Individuals with Intellectual or Developmental Disabilities (I/DD) Children & Youth - Pregnant and Postpartum Individuals at-risk for Adverse Perinatal | 707-412-3176 | Sonoma |

Enhanced Care Management (ECM) Providers in Marin, Napa, & Sonoma County

Organizations listed have executed contracts with KP as of **December 13, 2024**

Other providers are welcomed to apply to join our provider network via the NLEs.



| Provider | Services/Populations of Focus | Phone Number | Counties Served |
|--|--|---|---------------------|
| Mindful Living Centers | Adults - Individuals Experiencing Homelessness Adults - Individuals at-risk for IP and ED Adults - Individuals with SMI/SUD Adults - living in the community at-risk for LTC Adults - NF residents transitioning to the community Adults - Individuals with Intellectual or Developmental Disabilities Adults -Pregnant and Postpartum Individuals at-risk for Adverse Perinatal Children & Youth - Individuals Experiencing Homelessness Children & Youth - Individuals at-risk for IP and ED Children & Youth - Individuals with SMI/SUD Children & Youth - Enrolled in California Children's Services (CCS) or WCM w/needs Children & Youth - Involved in Child Welfare Children & Youth - Individuals with Intellectual or Developmental Disabilities (I/DD) Children & Youth - Pregnant and Postpartum Individuals at-risk for Adverse Perinatal | 714-805-8861 | Marin, Napa, Sonoma |
| Resolution Care (dba Vynca Care) [Birth Equity Specialty Provider Type] | Adults - Individuals Experiencing Homelessness Adults - Individuals at-risk for IP and ED Adults - Individuals with SMI/SUD Adults - living in the community at-risk for LTC Adults - NF residents transitioning to the community Adults - Individuals with Intellectual or Developmental Disabilities Adults -Pregnant and Postpartum Individuals at-risk for Adverse Perinatal Children & Youth - Individuals Experiencing Homelessness Children & Youth - Individuals at-risk for IP and ED Children & Youth - Individuals with SMI/SUD Children & Youth - Enrolled in California Children's Services (CCS) or WCM w/needs Children & Youth - Involved in Child Welfare Children & Youth - Individuals with Intellectual or Developmental Disabilities (I/DD) Children & Youth - Pregnant and Postpartum Individuals at-risk for Adverse Perinatal | 888-227-8884 | Marin, Napa, Sonoma |
| Seneca Family of Agencies | Children & Youth - Individuals Experiencing Homelessness Children & Youth - Individuals at-risk for IP and ED Children & Youth - Individuals with SMI/SUD Children & Youth - Individuals transitioning from incarceration | 415-482-6182 (Marin) 707-545-2700 (Sonoma) | Marin, Sonoma |

Enhanced Care Management (ECM) Providers in Marin, Napa, & Sonoma County

Organizations listed have executed contracts with KP as of **December 13, 2024**

Other providers are welcomed to apply to join our provider network via the NLEs.



| Provider | Services/Populations of Focus | Phone Number | Counties Served |
|--|--|--------------|---------------------|
| Serene Health IPA [Birth Equity Specialty Provider Type] | Adults - Individuals Experiencing Homelessness Adults - Individuals at-risk for IP and ED Adults - Individuals with SMI/SUD Adults - Individuals transitioning from incarceration (Adult) Adults - living in the community at-risk for LTC Adults - NF residents transitioning to the community Adults -Pregnant and Postpartum Individuals at-risk for Adverse Perinatal Children & Youth - Enrolled in California Children's Services (CCS) or WCM w/needs Children & Youth - Involved in Child Welfare Children & Youth - Individuals with Intellectual or Developmental Disabilities (I/DD) Children & Youth - Pregnant and Postpartum Individuals at-risk for Adverse Perinatal | 844-737-3638 | Napa |
| Side by Side | Children & Youth - Individuals Experiencing Homelessness Children & Youth - Individuals at-risk for IP and ED Children & Youth - Individuals with SMI/SUD Children & Youth - Individuals transitioning from incarceration Children & Youth - Enrolled in California Children's Services (CCS) or WCM w/needs Children & Youth - Involved in Child Welfare | 415-457-3200 | Marin, Napa, Sonoma |
| St. Vincent Preventative Family Care [Birth Equity Specialty Provider Type] | Adults - Individuals Experiencing Homelessness Adults - Individuals at-risk for IP and ED Adults - Individuals with SMI/SUD Adults - Individuals transitioning from incarceration Adults - living in the community at-risk for LTC Adults - NF residents transitioning to the community Adults - Individuals with Intellectual or Developmental Disabilities Adults -Pregnant and Postpartum Individuals at-risk for Adverse Perinatal Children & Youth - Individuals Experiencing Homelessness Children & Youth - Individuals at-risk for IP and ED Children & Youth - Individuals with SMI/SUD Children & Youth - Individuals transitioning from incarceration Children & Youth - Enrolled in California Children's Services (CCS) or WCM w/needs Children & Youth - Involved in Child Welfare Children & Youth - Individuals with Intellectual or Developmental Disabilities (I/DD) Children & Youth - Pregnant and Postpartum Individuals at-risk for Adverse Perinatal | 901-337-3003 | Napa |

Enhanced Care Management (ECM) Providers in Marin, Napa, & Sonoma County

Organizations listed have executed contracts with KP as of **December 13, 2024**

Other providers are welcomed to apply to join our provider network via the NLEs.



Providers with blue text are newly added

| Provider | Services/Populations of Focus | Phone Number | Counties Served |
|--|---|----------------|---------------------|
| Stanford Youth Solutions (dba Stanford Sierra Youth & Families) | Children & Youth - Individuals Experiencing Homelessness Children & Youth - Individuals at-risk for IP and ED Children & Youth - Individuals with SMI/SUD Children & Youth - Individuals transitioning from incarceration | (530) 656-5080 | Napa |
| Star Nursing Inc | Adults - Individuals Experiencing Homelessness Adults - Individuals at-risk for IP and ED Adults - Individuals with SMI/SUD Adults - living in the community at-risk for LTC Adults - NF residents transitioning to the community Children & Youth - Individuals Experiencing Homelessness Children & Youth - Individuals at-risk for IP and ED Children & Youth - Individuals with SMI/SUD | 877-687-7399 | Marin, Napa, Sonoma |
| Sterling Hospitalist Medical Group, Inc | Adults - Individuals Experiencing Homelessness Adults - Individuals at-risk for IP and ED Adults - Individuals with SMI/SUD Adults - living in the community at-risk for LTC Adults - NF residents transitioning to the community Adults - Individuals with Intellectual or Developmental Disabilities Children & Youth - Individuals Experiencing Homelessness Children & Youth - Individuals at-risk for IP and ED Children & Youth - Individuals with SMI/SUD Children & Youth - Individuals with Intellectual or Developmental Disabilities (I/DD) | 714-897-1085 | Sonoma |
| TLC Child & Family Services | Children & Youth - Individuals Experiencing Homelessness Children & Youth - Individuals at-risk for IP and ED Children & Youth - Individuals transitioning from incarceration Children & Youth - Involved in Child Welfare | 707-528-3020 | Sonoma |
| Victor Community Support Services Inc | Children & Youth - Individuals Experiencing Homelessness Children & Youth - Individuals at-risk for IP and ED Children & Youth - Individuals with SMI/SUD Children & Youth - Individuals transitioning from incarceration Children & Youth - Enrolled in California Children's Services (CCS) or WCM w/needs Children & Youth - Involved in Child Welfare | (844) 547-1442 | Sonoma |
| Your Home Assistant LLC | Adults - living in the community at-risk for LTC Adults - NF residents transitioning to the community | 916-970-9001 | Marin, Napa, Sonoma |

Enhanced Care Management (ECM) Providers in Marin, Napa, & Sonoma County

Organizations listed have executed contracts with KP as of **December 13, 2024**

Other providers are welcomed to apply to join our provider network via the NLEs.



| Provider | Services/Populations of Focus | Phone Number | Counties Served |
|--|---|----------------|---------------------|
| Stanford Youth Solutions (dba Stanford Sierra Youth & Families) | Children & Youth - Individuals Experiencing Homelessness Children & Youth - Individuals at-risk for IP and ED Children & Youth - Individuals with SMI/SUD Children & Youth - Individuals transitioning from incarceration | (530) 656-5080 | Napa |
| Sterling Hospitalist Medical Group, Inc | Adults - Individuals Experiencing Homelessness Adults - Individuals at-risk for IP and ED Adults - Individuals with SMI/SUD Adults - living in the community at-risk for LTC Adults - NF residents transitioning to the community Adults - Individuals with Intellectual or Developmental Disabilities Children & Youth - Individuals Experiencing Homelessness Children & Youth - Individuals at-risk for IP and ED Children & Youth - Individuals with SMI/SUD Children & Youth - Individuals with Intellectual or Developmental Disabilities (I/DD) | 714-897-1085 | Sonoma |
| TLC Child & Family Services | Children & Youth - Individuals Experiencing Homelessness Children & Youth - Individuals at-risk for IP and ED Children & Youth - Individuals transitioning from incarceration Children & Youth - Involved in Child Welfare | 707-528-3020 | Sonoma |
| Victor Community Support Services Inc | Children & Youth - Individuals Experiencing Homelessness Children & Youth - Individuals at-risk for IP and ED Children & Youth - Individuals with SMI/SUD Children & Youth - Individuals transitioning from incarceration Children & Youth - Enrolled in California Children's Services (CCS) or WCM w/needs Children & Youth - Involved in Child Welfare | (844) 547-1442 | Sonoma |
| Your Home Assistant LLC | Adults - living in the community at-risk for LTC Adults - NF residents transitioning to the community | 916-970-9001 | Marin, Napa, Sonoma |

Community Supports (CS) Providers in Marin, Napa, & Sonoma County

Organizations listed have executed contracts with KP as of **December 13, 2024**

Other providers are welcomed to apply to join our provider network via the NLEs.



| Provider | Services/Populations of Focus | Phone Number | County/Counties |
|--|--|----------------|---------------------|
| Accentcare of California | Housing Transition/Navigation Services Housing Deposits Housing Tenancy & Sustaining Services Respite Services Personal Care and Homemaker Services | 818-837-3775 | Marin, Napa, Sonoma |
| Alegre Care Inc. | Respite Services Personal Care and Homemaker Services | 818-837-3775 | Marin, Napa, Sonoma |
| ASSURED INDEPENDENCE | Home Modifications | 425-516-7400 | Marin, Napa, Sonoma |
| CityServ | Housing Transition/Navigation Services Housing Deposits Housing Tenancy & Sustaining Services Short-Term Post-Hospital Housing Recuperative Care Day Habilitation | (559) 802-3667 | Marin, Napa, Sonoma |
| Committee of the Shelterless DBA COTS | Recuperative Care | 707-776-4777 | Marin, Napa, Sonoma |
| Community Support Network, DBA Housing and Wellness Program | Housing Transition/Navigation Services Housing Deposits Housing Tenancy & Sustaining Services Short-Term Post-Hospital Housing | 707-757-7892 | Marin, Sonoma |
| Connect America West | Home Modifications | 707-200-2138 | Marin, Napa, Sonoma |
| Evolve Emod, LLC | Home Modifications Asthma Remediation | 844-438-7577 | Marin, Napa, Sonoma |

Community Supports (CS) Providers in Marin, Napa, & Sonoma County

Organizations listed have executed contracts with KP as of **December 13, 2024**

Other providers are welcomed to apply to join our provider network via the NLEs.



Providers with blue text are newly added

| Provider | Services/Populations of Focus | Phone Number | County/Counties |
|---------------------------------------|---|----------------|---------------------|
| Home Safety Services, Inc | Home Modifications | 888-388-3811 | Marin, Napa, Sonoma |
| Independent Living Systems | Housing Transition/Navigation Services Housing Deposits Housing Tenancy & Sustaining Services Nursing Facility Transition/Diversion to Assisted Living Facilities Community Transition Services/Nursing Facility Transition to a Home | 844-320-5182 | Marin, Napa, Sonoma |
| Innovative Health Solutions | Housing Transition/Navigation Services Housing Deposits Housing Tenancy & Sustaining Services Day Habilitation | 707-205-5572 | Napa |
| J&M Homecare Services, LLC | Respite Services Personal Care and Homemaker Services | 925-552-6500 | Marin, Sonoma, |
| Lifeline Systems Company | Home Modifications | 800-451-0525 | Marin, Napa, Sonoma |
| Maxim Healthcare | Respite Services Personal Care and Homemaker Services | (510) 982-3773 | Marin, Napa, Sonoma |
| Mom's Meals | Meals/Medically Tailored Meals | 877-508-6667 | Marin, Napa, Sonoma |
| Serene Health IPA | Housing Transition/Navigation Services Housing Deposits Housing Tenancy & Sustaining Services Short-Term Post-Hospital Housing Community Transition Services/Nursing Facility Transition to a Home | 844-737-3638 | Marin, Napa, Sonoma |

Community Supports (CS) Providers in Marin, Napa, & Sonoma County

Organizations listed have executed contracts with KP as of **December 13, 2024**

Other providers are welcomed to apply to join our provider network via the NLEs.

| Provider | Services/Populations of Focus | Phone Number | County/Counties |
|--|---|--------------|---------------------|
| Solano Women in Medicine | Housing Transition/Navigation Services Housing Deposits Housing Tenancy & Sustaining Services Respite Services | 707-277-1677 | Marin, Napa, Sonoma |
| St. Vincent Preventative Family Care | Housing Transition/Navigation Services Housing Deposits Housing Tenancy & Sustaining Services | 901-337-3003 | Napa |
| Sterling Hospitalist Medical Group, Inc | Housing Transition/Navigation Services Housing Deposits Housing Tenancy & Sustaining Services | 714-897-1071 | Sonoma |
| Uncuffed Project Inc | Recuperative Care | 415-320-8798 | Marin, Napa, Sonoma |
| Victor Community Support Services Inc | Housing Transition/Navigation Services | 844-547-1442 | Sonoma |

