



PATH – Collaborative Planning & Implementation (CPI)

Welcome! The Northwest Collaborative Planning Meeting will be starting shortly.

May 21, 2024



POPULATION HEALTH
INNOVATION LAB

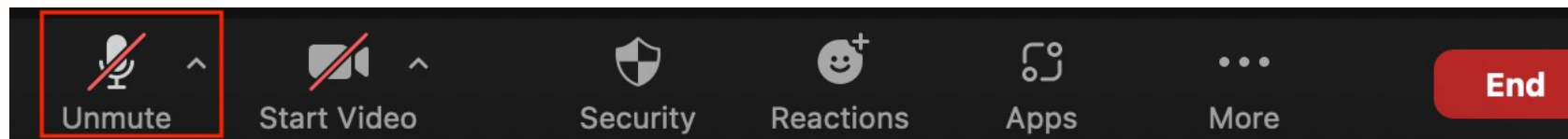
A Program of the PUBLIC HEALTH INSTITUTE



This event is being recorded.

Recordings will be available per request after the event. Please email PATH@pophealthinnovationlab.org

Please mute your microphone and video during the presentation.





PATH – Collaborative Planning & Implementation (CPI)

Northwest Collaborative Planning Meeting

May 21, 2024



POPULATION HEALTH
INNOVATION LAB

A Program of the PUBLIC HEALTH INSTITUTE



Thank you to our sponsors



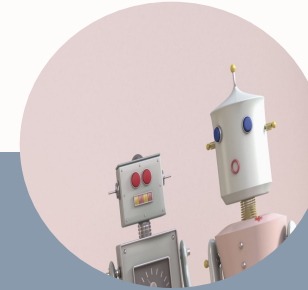


Welcome & Housekeeping



Roll Call

Please rename yourself as
Name, Organization
and share in the chat.



Participation Eligibility
Vendors and salespeople
should recuse themselves
from soliciting during this
collaborative convening.

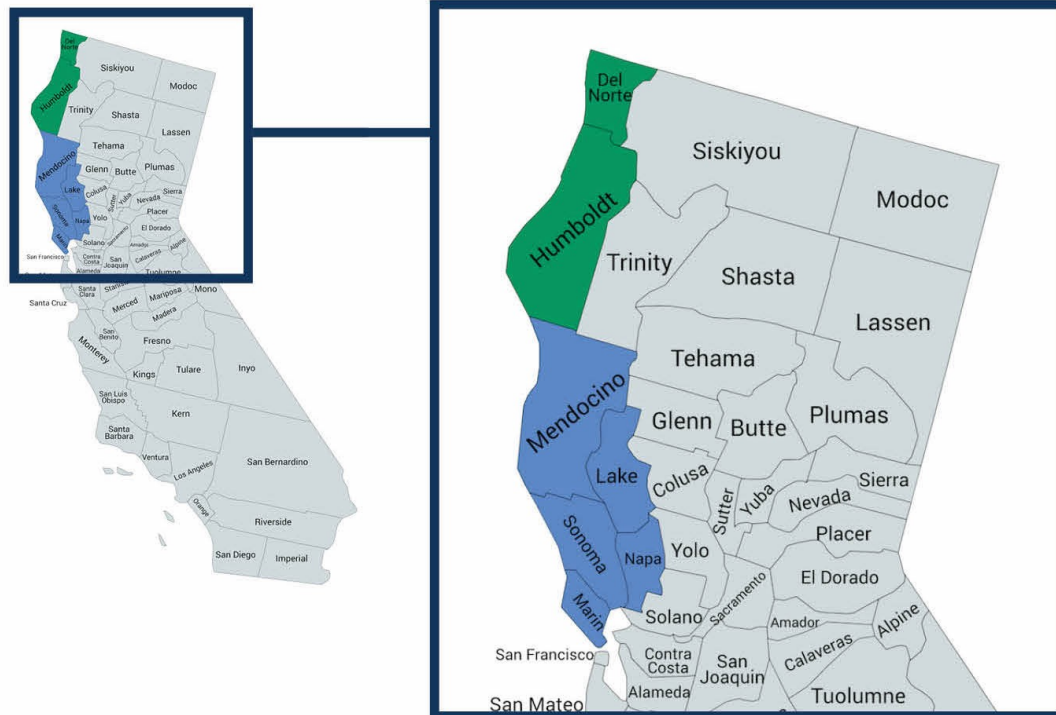
AI meeting tools restricted.



Collaborative Planning & Implementation Overview

Region Counties Supported by PHIL

-  Northwest
-  Southwest



CPI collaboratives will work together to identify, discuss, and resolve CalAIM implementation issues.

- Learn more about the PATH CPI initiative [here](#).
- Catch up with us! Find meeting minutes, Readiness Roadmap Resources, and registration links on the [PHIL website](#).



Agenda for Today

- Welcome, Framing, & Check-In
- Focus on Community Care Hubs
- Local Organization Spotlight: North Coast Health Improvement and Information Network (NCHIIN)
- Update from Partnership HealthPlan of California
- Updates about Upcoming Events
- Evaluation & Close



Objectives

- Facilitate an open forum to enhance transparency surrounding challenges, successes, and innovations in CalAIM Enhanced Care Management (ECM) and Community Supports services.
- Increase understanding of Administrative Hub models within CalAIM.
- Share follow-up information about Partnership HealthPlan's Enhanced Care Management (ECM) Quality Incentive Program.
- Encourage shared learning and provide a platform for open dialogue with CalAIM providers, local Managed Care Plans, and other local stakeholders to strengthen a culture of collaboration.



Land Acknowledgment

The Population Health Innovation Lab team respectfully acknowledges that we live and operate on the unceded land of Indigenous peoples throughout the U.S.

We acknowledge the land and country we are on today as the traditional and treaty territory of the Native American, Alaska Native, and Tribal nations who have lived here and cared for the Land since time immemorial. We further acknowledge the role Native American, Alaska Native, and Tribal nations have today in taking care of these lands, as well as the sacrifices they have endured to survive to this day.



Commitments to Community Inclusivity

Be Present, Brave, and Curious

- Encourage different opinions and respectful disagreement
- Embrace conflict which can deepen our understanding
- Acknowledge the risk speakers take, and value the privilege to learn from one another.
- Make use of opportunities to connect person-to-person

Create An Inclusive Space

- Invite the unheard voices
- Take responsibility for our own voices (make space)
- Resist the temptation to only witness the dialogue (take space)*

Invite Anti-Racist Dialogue

- **Be aware we all have a bias that may impact action; biases are learned and can be unlearned.**
- Address racially biased systems and norms
- Recognize the vast and varied lived experiences participants have with racism.
- Be intentional about power dynamics and how you exercise your privilege.
- Avoid defensive responses when people speak from lived experiences with racism

Be Accountable

- Foster awareness of unrepresented community members not “in the room”
- Respect each other’s time - participate fully and prepare for each activity
- Commit to actions that move items beyond discussion
- Practice patience and persistence – we cannot solve everything in a single conversation and will revisit topics that require additional discussion*



Check-In

When you hear the term "hub" what does it mean to you?
What would it do?



Community Care Hubs

A Promising Model to Coordinate Health & Social Care,
Address Social Determinants of Health,
and Advance Health Equity



The Buzz Around Hubs

Can CalAIM be implemented through a Hub Model?

Are Accountable Communities for Health (ACHs) an example of a Community Care Hub?

Applicants can apply for [PATH] CITED funding as a Hub on behalf of providers or CBOs, but...

Are Community Information Exchanges (CIEs) considered Community Care Hubs?

There is a need for formal Guidance... DHCS needs to figure out this Hub thing and clearly communicate expectations around this!

What is Partnership HealthPlan of California (PHC) doing or thinking about CalAIM Hubs? Does PHC even allow Hubs?



Historical Federal Investment in Community Care Hubs



From *Partnership to Align Social Care*: <https://www.partnership2asc.org/cch-resources/>

For more information and national examples of successful Community Care Hubs:
[Community Care Hubs | Partnership to Align Social Care \(partnership2asc.org\)](https://www.partnership2asc.org/cch-resources/)



A Promising Model for Health and Social Care Coordination

Figure S.1. The Community Care Hub Model

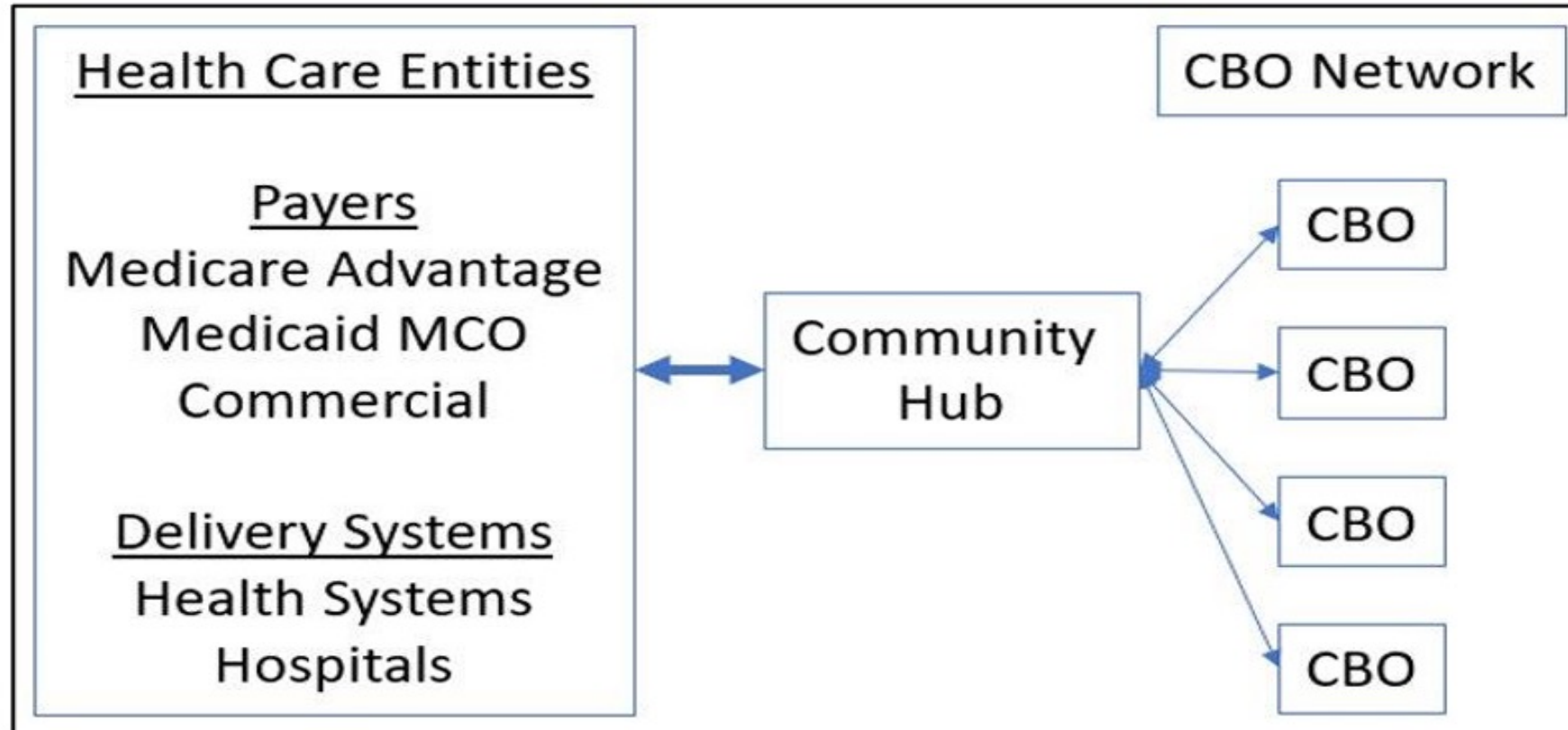


Image from the *HHS Strategic Approach to Addressing Social Determinants of Health to Advance Health Equity*, November 2023: [health-social-care-coordination.pdf \(hhs.gov\)](https://www.hhs.gov/health-social-care-coordination/pdf)



Emerging CalAIM Hub Examples

Administrative Services Entity (ASE)

In April 2023, Aliados Health launched a Hub Model as an Administrative Services Entity in collaboration with our Medi-Cal Managed Care Plan, Partnership HealthPlan of California (PHC).

Alameda County's Care Neighborhood is a partnership between the Community Health Center Network and the Medi-Cal Managed Care plans in the County to administer CalAIM Enhanced Care Management (ECM) Services.

In various regions, hubs are emerging to coordinate and serve specific populations within CalAIM, such as Continuums of Care coordinating CalAIM Community Supports designed for individuals experiencing homelessness.

Network Lead Entities (NLE)

Kaiser Permanente fully launched CalAIM services in 2024 through contracts with Full Circle Health Network, Independent Living Systems, and Partners in Care Foundation which function as CalAIM network hubs for Kaiser.



Elevating the Expertise of Local Partners

Local approaches to the
CalAIM implementation journey.

Welcome:

North Coast Health Improvement
and Information Network (NCHIIN)

Jessica Osborne-Stafsnes, MSHS

Chief Operating Officer, NCHIIN



Questions?



Partnership HealthPlan of California Presentation

Updates on CalAIM

Ashley Peel, Enhanced Care Management (ECM)

Jeannine O'Connell, Community Supports



ECM QIP Pop Up Event: June 10th

PHIL is proud to host, in collaboration with Partnership HealthPlan of California, a first of its kind in-person ECM QIP training in McKinleyville on June 10, 2024:

- Blood Pressure Monitoring
- Depression Screening
- Timely Reporting Tips
- RSVP Required! Register Here -->





Coming Soon!

Quarterly Policy Briefs:

- What to expect?
- Why it matters to you...

Our next CPI regional meeting is virtual. We hope to see you online!

Tuesday, June 18th ([Register here](#))





Office Hours

PATH CPI Office Hours:

- Tuesday, May 21 from 2:00 – 3:00 pm ([Register here](#))
- Wednesday, June 12 from 12:00 – 1:00 pm ([Register here](#))
- Tuesday, June 18 from 2:00 – 3:00 pm ([Register here](#))*
- Monday, June 24 from 1:00 – 2:00 pm ([Register here](#))



**This special Office Hours will be hosted at the end of the Northwest CPI meeting*



Post-Event Evaluation

To continue improving our work as your CPI Facilitator, PHIL kindly asks that you complete the brief survey that pops up in a new tab at the close of the meeting. Your feedback ensures quality improvement and will inform planning and activities through the evolution of the collaborative.



Thank You!

Feel free to contact our PATH CPI team

Tammy Chandler

PATH CPI Policy & Quality
Improvement Manager
tchandler@phi.org

Kathryn Stewart

Director of Learning and Action
kastewart@phi.org

Sue Grinnell

Director of PHIL
sgrinnell@phi.org

Jessica Sanchez

Program Associate
jsanchez2@phi.org

Stefani Hartsfield

Consultant
stefani@hartsfieldhealth.com

For general inquiries, please feel free to email path@pophealthinnovationlab.org

Thank you!

