

# Collaborative Planning and Implementation (CPI) Initiative for the Northwest & Southwest Regions

## Aim, Readiness Roadmap and Support Strategies

### Collaborative Aim:

The PATH Collaborative Planning and Implementation (CPI) initiative will support the advancement of CPI participants at least one step along the *Readiness Roadmap* towards successfully implementing Enhanced Care Management (ECM) and Community Supports services within the Medi-Cal delivery system through collaborative solutions that expand CPI participants' capacity and infrastructure needed to move towards an equitable, coordinated, and accessible Medi-Cal system by Dec 31, 2023.

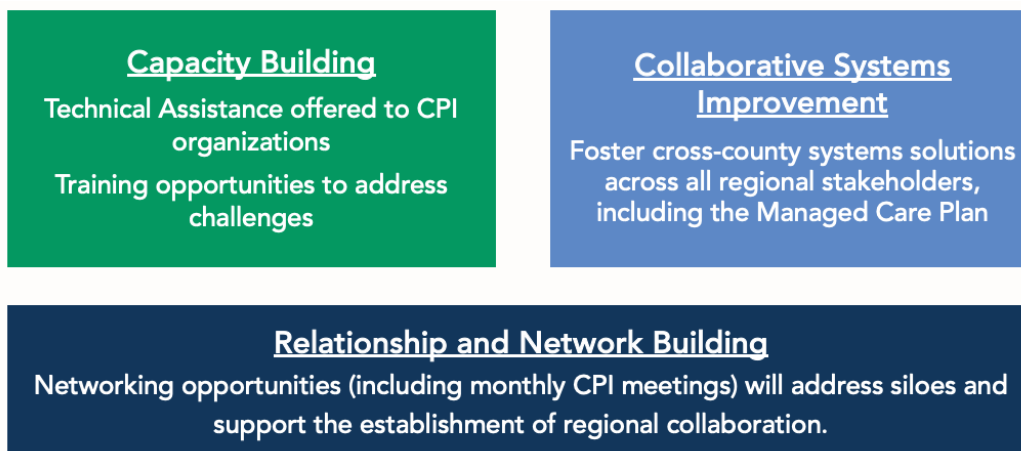
### Readiness Roadmap:

WHERE IS OUR ORGANIZATION ON THE READINESS ROADMAP?



### Support Strategies:

To address some of the implementation challenges, we propose a multi-pronged approach to providing support to organizations, counties, and the region.



**POPULATION HEALTH  
INNOVATION LAB**

A Program of the PUBLIC HEALTH INSTITUTE