



Measuring Aligning Across Sectors

Thursday, February 10, 2022
1:00 – 2:00 pm PT



POPULATION HEALTH
INNOVATION LAB

A Program of the PUBLIC HEALTH INSTITUTE



Welcome

Sue Grinnell, MPH

she/her/hers

Director and Principal Investigator,
Population Health Innovation Lab,
Public Health Institute



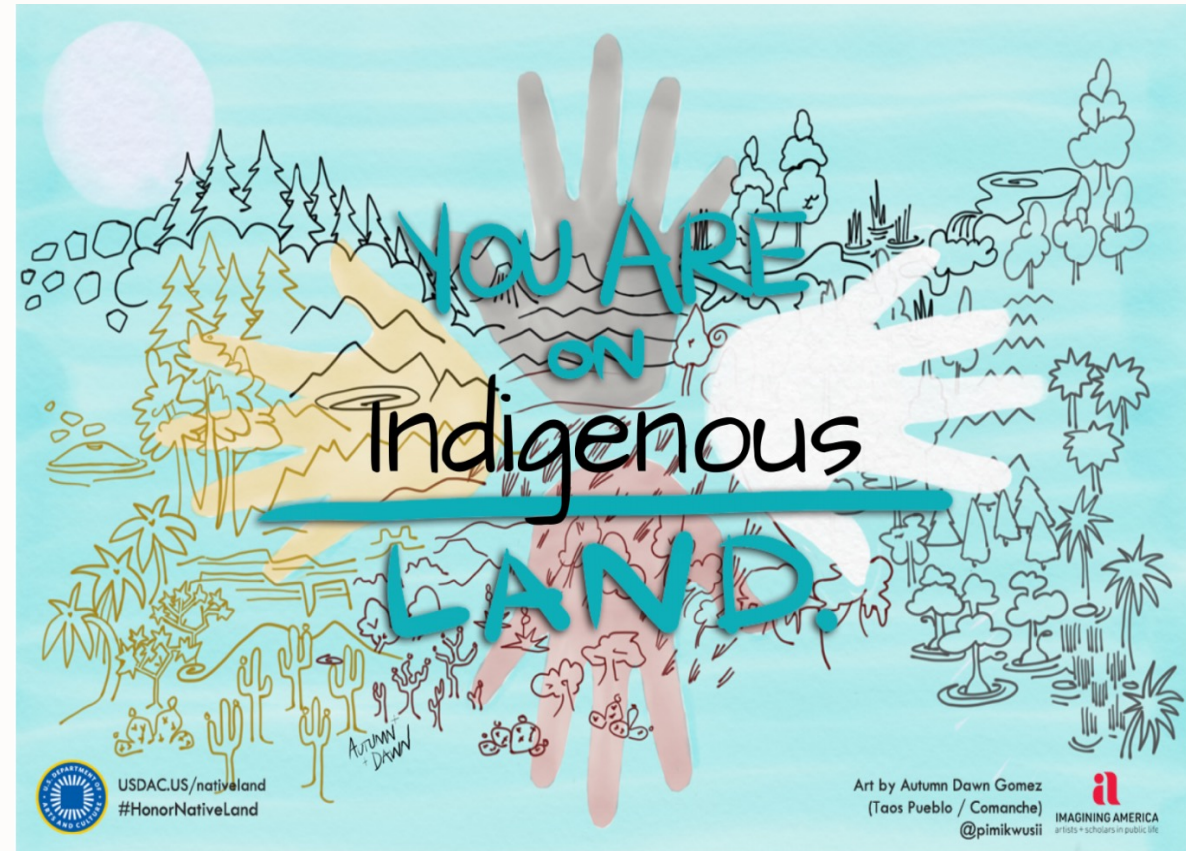


Land Acknowledgement

My place of residence is Olympia, Washington is on the traditional territories and ancestral homelands of the **Nisqually, Coast Salish, Cowlitz, and Chehalis nations.**

Let us acknowledge the painful history of forced removal from this territory and pay our respect to the diverse Indigenous peoples still connected to this land.

Let us also give thanks to all Tribal Nations and the ancestors of this place.



Learn about the nations that have lived where you are: Native-Land.ca



POPULATION HEALTH INNOVATION LAB

A Program of the PUBLIC HEALTH INSTITUTE



The Population Health Innovation Lab designs, catalyzes, and accelerates innovative approaches that advance health, well-being, and equity.

Focus on Supporting Success and Impact of Health Focused Multisector Collaboratives

Participatory
leadership
training & support

Facilitating
systems change
with multisector
collaboratives

Learning lab &
convening design

Social science
research

Network data
collection,
analysis, &
visualization

Participatory &
realist evaluation

Translating data
to practice

Systems change
frameworks
(Theory U)



Funder Acknowledgement

The Aligning Systems for Health Rapid-Cycle Research was conducted by the Population Health Innovation Lab, a program of the Public Health Institute.

Funding for this project has been made possible through the Aligning Systems for Health initiative, led by the Georgia Health Policy Center with support from the Robert Wood Johnson Foundation.



Objectives

- Describe the process and results of a study validating measures for aligning across sectors.
- Discuss how to measure, collect, and analyze reliable evidence to tell compelling stories about your communities.
- Explore PHIL's "Toolbox for Measuring Cross-Sector Alignment."
- Learn about the Framework For Aligning Sectors.



Presenters



**Stephanie Bultema, MAAL,
PhD Candidate**
she/her/hers

Director of Research
and Network Science,
Population Health Innovation Lab,
Public Health Institute



Emily Christopher, MPH
she/her/hers

Population Health
Research Specialist,
Population Health Innovation Lab,
Public Health Institute



Daniel Lanford, PhD
he/him/his

Senior Research Associate,
Georgia Health Policy Center

The Challenge:

How to measure progress in cross-sector collaboratives?

- Results may not be measurable for years
- Lack of availability of/access to reliable data
- Need to effectively communicate progress to sustain funding





The Solution:

Reliable, validated process measures

- Shift to measuring process outcomes
- Use these to inform long-term approaches to aligning
- Support securing funds to continue the work

Research Objective

To validate measures for aligning that can be used by MSCs to measure, compare, and assess the relative importance of concepts from the Framework for Aligning Sectors[©]

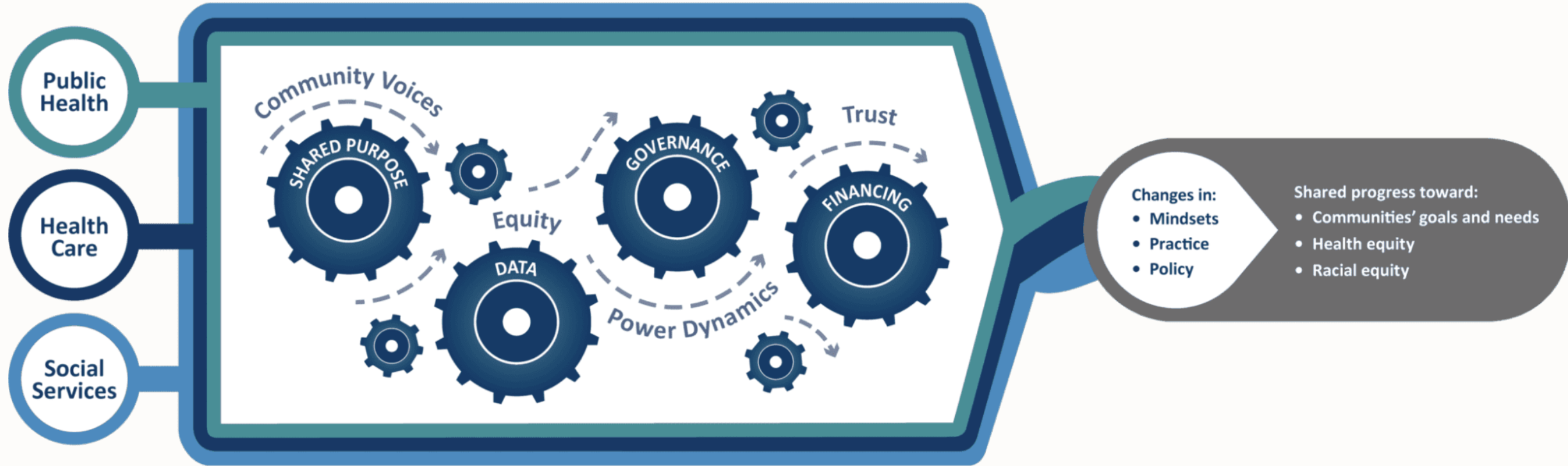


This research project...

- Validated over 200 measures of cross-sector alignment
- Looked beyond public health
- Drew on PHIL's Aligning Systems for Health research
- Was guided by the Framework for Aligning Sectors[©]



A FRAMEWORK FOR ALIGNING SECTORS



We used...

- Mixed-methods research design
- Realist evaluation lens
- New data
- Existing evidence from a related research project



Data Sources

- Used existing interview, document, survey, and population health data
- Validation survey
- 20 follow-up interviews
- Two focus groups





Reliability & Validity

Reliability

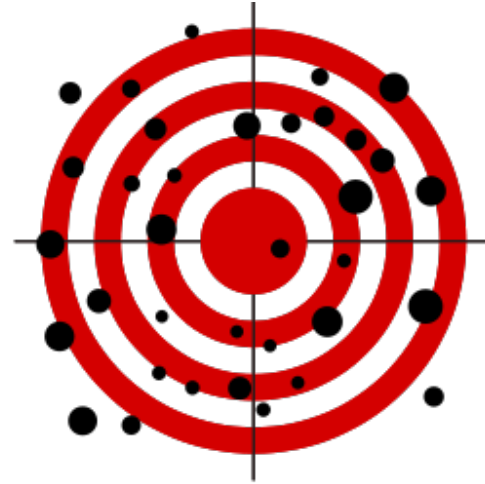
- Refers to the *consistency* of an instrument/measurement
- The degree to which your measurement tool/approach yields the same result each time it's used
- *Necessary* but not *sufficient* for determining validity

Validity

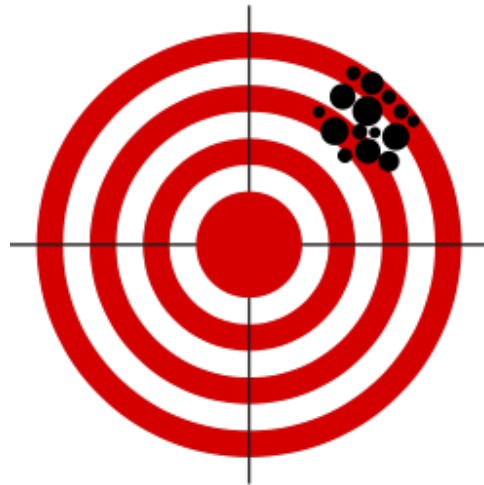
- Refers to the *accuracy* of an instrument/measurement
- The degree to which you're measuring what you claim to be measuring
- Two broad types of validity
 - Internal
 - External



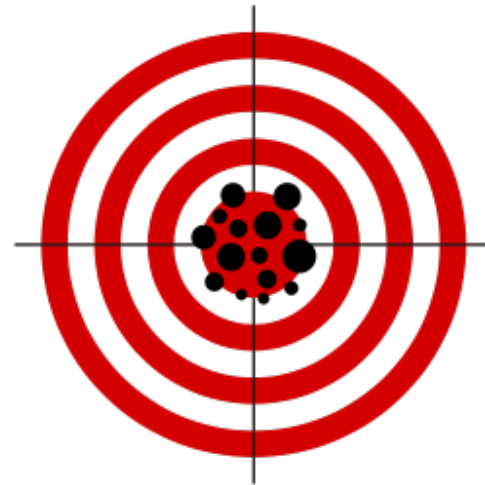
Unreliable & Invalid



Unreliable, But Valid



Reliable, Not Valid



Both Reliable & Valid



Types of Validity



Face validity: Do the measures resonate with end users? Are they understandable?



Content validity: Are we measuring the full spectrum of what's included in a latent construct like trust or equity?



Construct validity: Are we measuring the intended concept?



Convergent validity: Do the measures for a construct match up as we expect they would?

Methods

- Mixed-methods approach to address issues of reliability and validity
- Descriptive and inferential techniques used in analysis to explore the relationships among aligning concepts
- Constant comparison analysis
- Latent variable analyses





What We Learned

- Local context shapes everything
- Adaptive Factors are hard to separate
- Equity as process and outcome
- Collective Action as a possible Core Component
- Representation as a possible Adaptive Factor
- Effectiveness & Alignment as short-term outcomes



Local Context Shapes Everything

Five latent variables emerged on
Local Context

1. Local characteristics
2. Capacity
3. Racism beliefs
4. Length of individual
and organizational participation
5. Levels of individual and
organizational engagement





New! Collective Action as Core Component

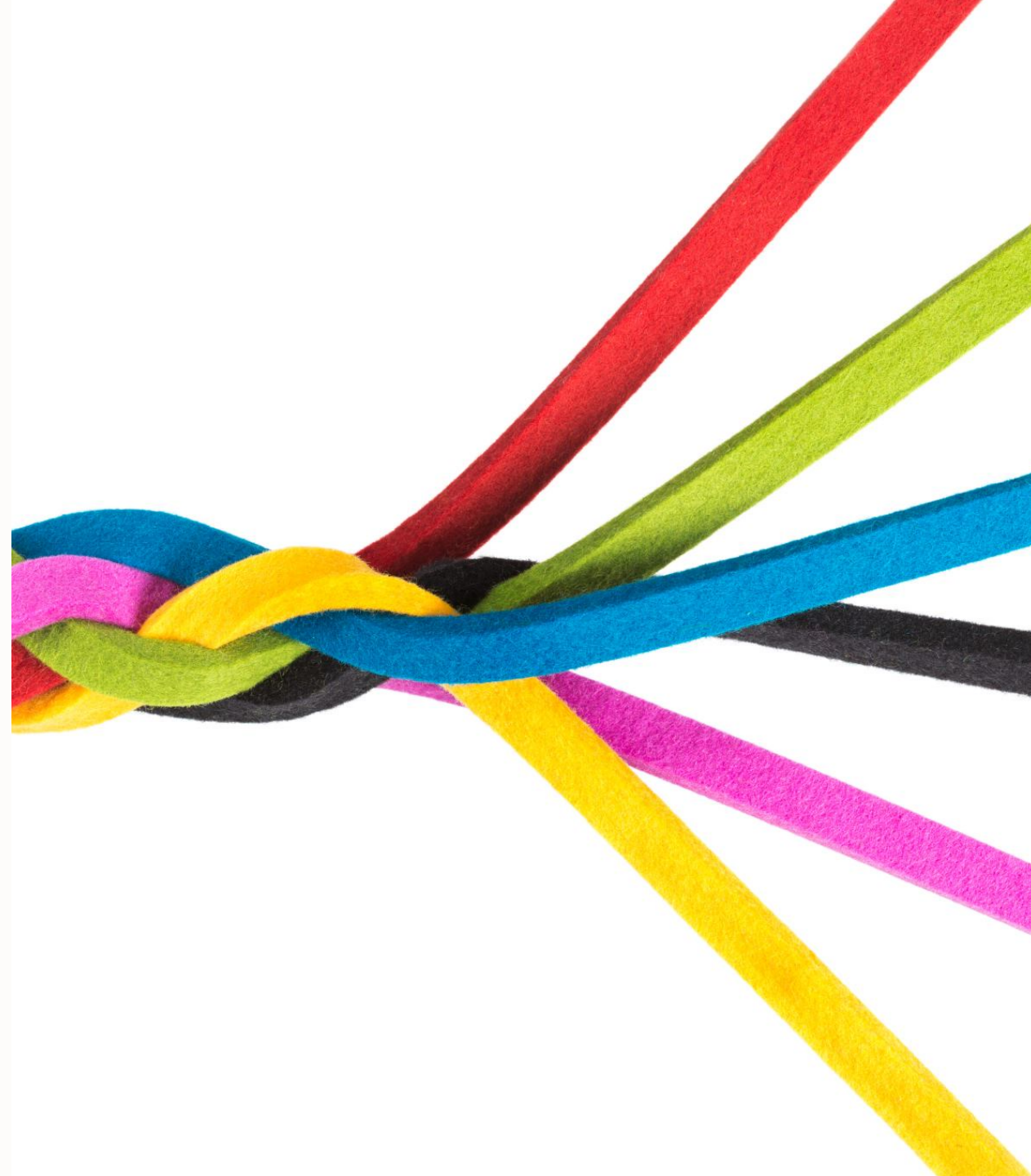
Identified through EFA & CFA;
Validated through SEM, interviews,
existing theory

Supported by qualitative data

Ex: The MSC has active
engagement from organizations
representing multiple sectors

Adaptive Factors

- Woven throughout all activities
- Hard to separate
- Validated Trust, Community Voices, and Equity
- Challenges with Power Dynamics
- Room for improvement in content validity





New! Representation

True representation of the community at the decision-making table is essential.

Should include diversity in many areas:

- Racial/ethnic
- Geographic
- Cultural
- Lived experience
- Role in the ACH, the community, and more





Equity As Process & Outcome

Process (Adaptive Factor)

➤➤➤➤➤➤➤ Equitable process that demonstrate an MSC's commitment to equity, diversity, and inclusion.

Outcome

➤➤➤➤➤➤➤ Progress toward improving equity in communities or decreases in health disparities.



New! Effectiveness & Alignment

Effectiveness

- Indicators of perceived changes in mindsets & practice
- Ex: The MSC has increased collaboration across organizations, sectors, & tribal partners

Alignment

- Indicators of perceived changes in mindsets.
- Ex: The MSC helps align resources and activities across community, clinical, & tribal partners



Practical Applications

Barriers

- Data delays
- Lack of staff capacity/expertise
- Data sharing

Facilitators

- Diverse and representative community voices should inform initial planning
- Data collected from varied languages and locations
- Storytelling / qualitative data



Limitations



- Varied coverage of Framework for Aligning Sectors[©]
- Generalizability
- Measures are subjective
- COVID-19

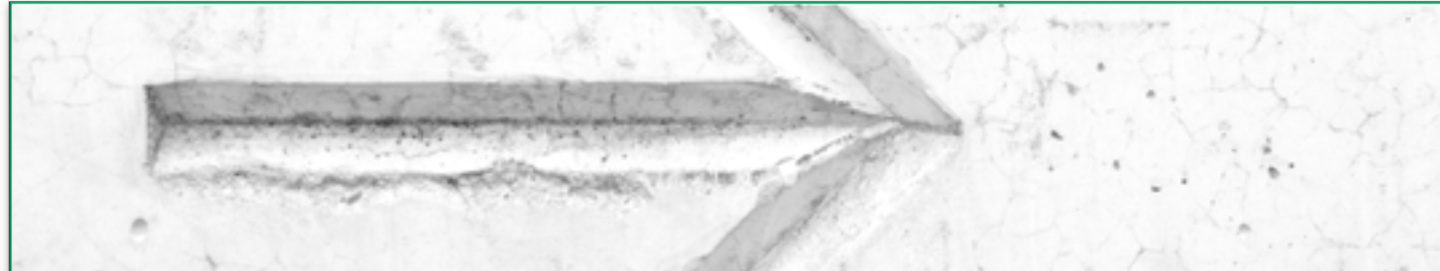


Future Research

- Validate additional measures for Power Dynamics, Shared Governance, and Equity
- More specific measures should be developed and validated for each aligning concept
- Identify best practices for measurement that build trust, centralize community voices
- A comprehensive resource that can guide the measurement work of MSCs



Toolbox for Measuring Cross-Sector Alignment

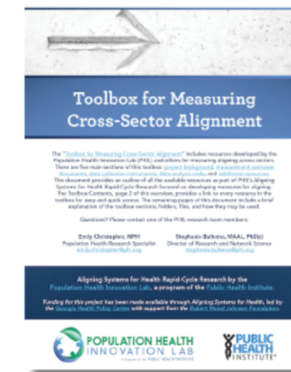


Toolbox for Measuring Cross-Sector Alignment

The "Toolbox for Measuring Cross-Sector Alignment" includes resources developed by the Population Health Innovation Lab and others for measuring aligning across sectors. The toolbox can be used by:

- Researchers to study aligning across sectors
- Funders to inform funding priorities and reporting requests
- Evaluators to assess aligning efforts in cross-sector collaboratives
- Practitioners looking for process measures of aligning to integrate into performance management

To find measures that can be integrated into your aligning practice today, check out the [Measurement Overview Documents](#) and [Data Collection](#)

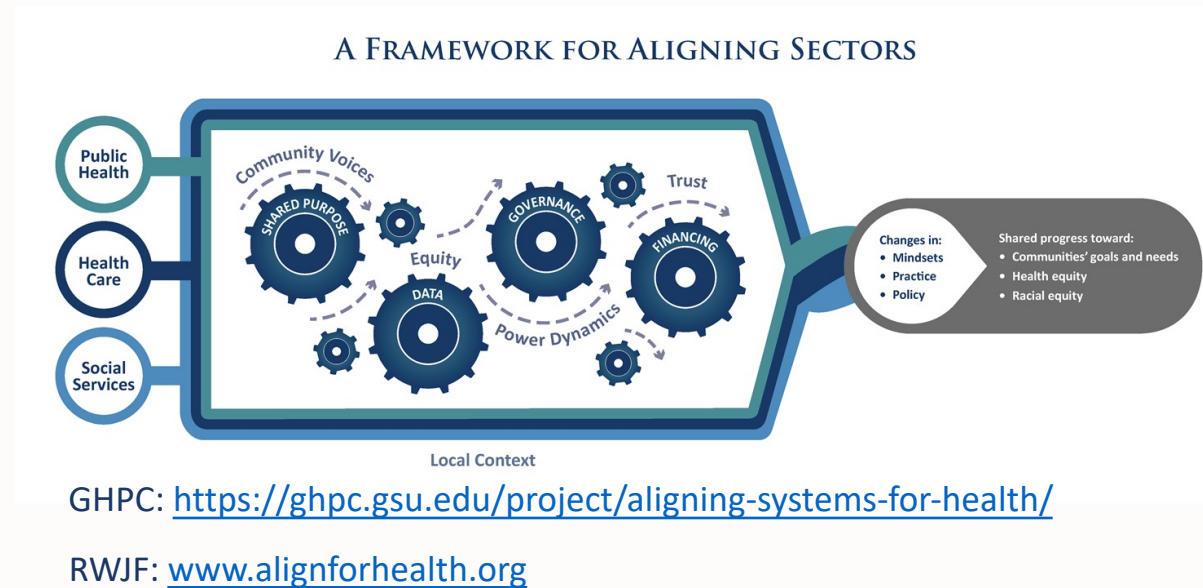


Download the "Toolbox for Measuring Cross-Sector Alignment" Overview



Measuring Aligning Efforts

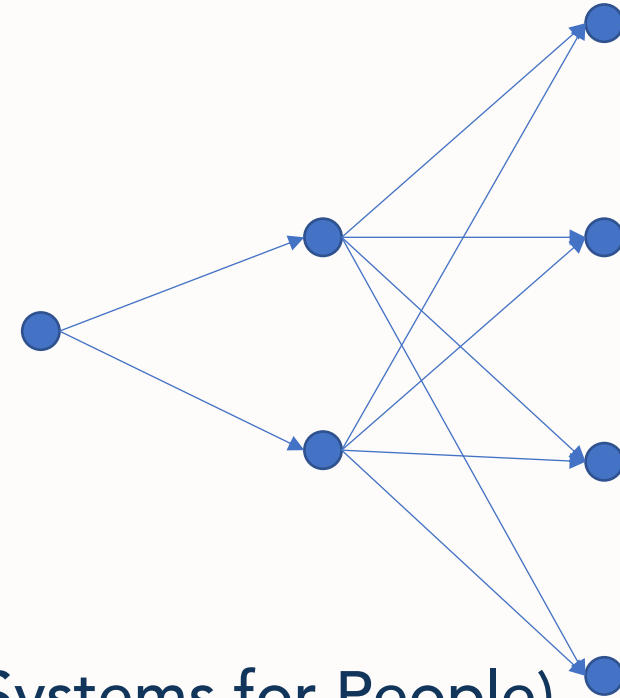
- Aligning Systems for Health
 - Robert Wood Johnson Foundation
 - Georgia Health Policy Center
- How do I know if I'm aligning?
- A measurement system
 - Field sensing
 - Information gathering
 - Development
- Welcome to the TEAM!
 - The Tool for Everyone Aligning and Measuring





The TEAM

- Introductory material
- Guidance
- Four main parts
 - Base Set
 - Featured Set
 - GrAASP (Group Assessment for Aligning Systems for People)
 - Compendium
- A living field effort
- Moving online now





The TEAM – Starting Today

- Introductory material
- Guidance
- Four main parts
 - Base Set
 - Featured Set
 - GrAASP (Group Assessment for Aligning Systems for People)
 - Compendium

aligning@gsu.edu



The TEAM – Into the Future

- Introductory material
- Guidance
- Four main parts
 - Base Set
 - Featured Set
 - GrAASP (Group Assessment for Aligning Systems for People)
 - Compendium

aligning@gsu.edu



Learn More About the National Project

- Contact Daniel Lanford
 - aligning@gsu.edu
 - dLanford1@gsu.edu
- [GHPC](#)
- [RWJF](#)



POPULATION HEALTH INNOVATION LAB

A Program of the PUBLIC HEALTH INSTITUTE

Learn more about PHIL at pophealthinnovationlab.org

Follow us on Twitter @PHInnovationLab



What Now?

- Main study continues
- Measurement Toolbox available on PHIL's website
- PHIL is available to support your MSC's needs!
 - Contact the study team at info@pophealthinnovationlab.org